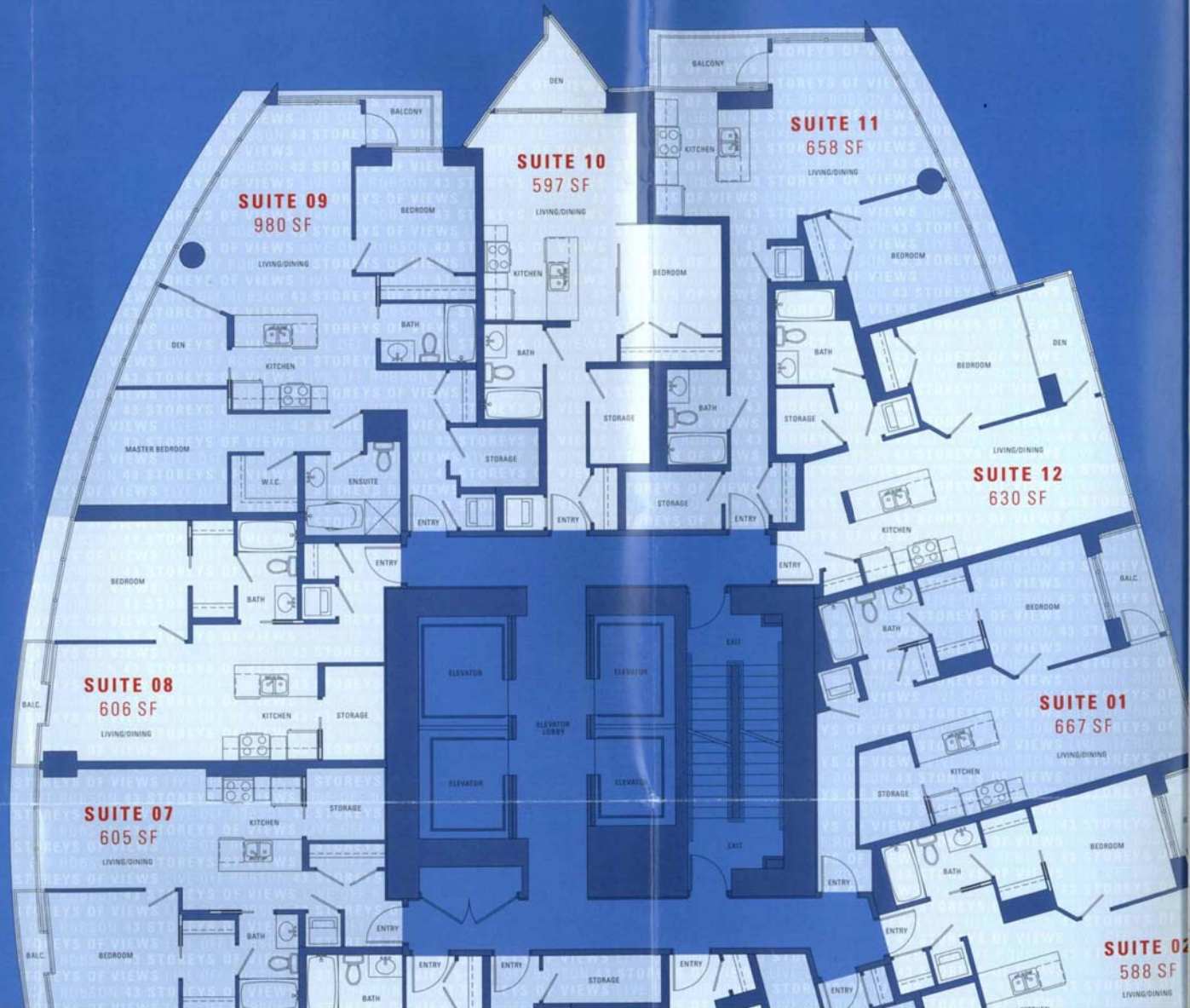


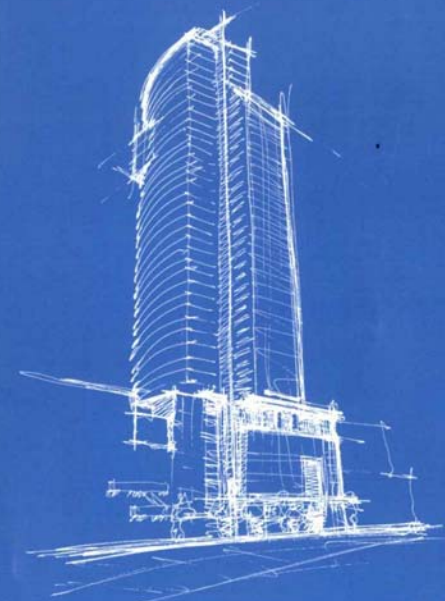
43

STOREYS OF VIEWS

LIFESTYLE Capitol Residences offer layouts tailored to every lifestyle with innovative floorplans, illuminating living spaces and optimal views. Select from one-bedroom to two-bedroom plus den residences on 43 spectacular floors, featuring five truly front-row penthouses and exquisite Capitol Collection residences on floors 31 – 43.

The Capitol lifestyle is urban and enviable, just moments from every luxury, convenience and pleasure. With a central locale in the city's vibrant Entertainment District, you'll find it all within walking distance.





AN INVESTMENT YOU CAN LIVE WITH First-time home buyers and savvy investors understand that affordable opportunities such as Capitol are rare. Wall Financial Management is proven and renowned for bringing quality and real value to downtown. Capitol Residences are designed to maximize the potential of both your investment and your lifestyle.

VIEWS Unbeatable Vancouver views surround you on every level. At 43 storeys, homes at Capitol are open to unobstructed views over the city, False Creek, North Shore, West End and beyond.

The Capitol Collection



LIFESTYLE Capitol Residences offer layouts tailored to every lifestyle with innovative floorplans, illuminating living spaces and optimal views. Select from one-bedroom to two-bedroom plus den residences on 43 spectacular floors, featuring five truly front-row penthouses and exquisite Capitol Collection residences on floors 31 – 43.

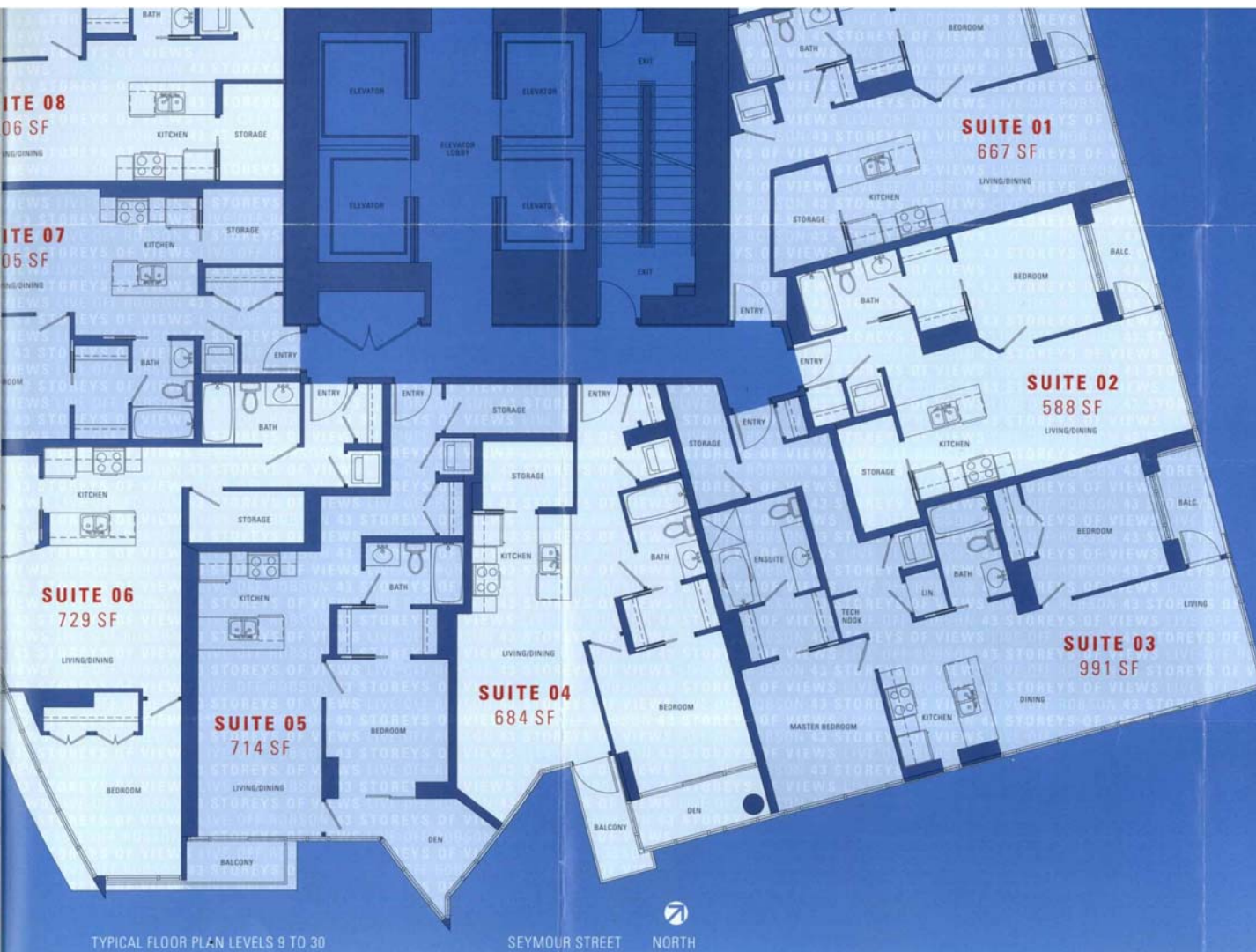
The Capitol lifestyle is urban and enviable, just moments from every luxury, convenience and pleasure. With a central locale in the city's vibrant Entertainment District, you'll find it all within walking distance. Situated between the fashionable Robson and hip Yaletown districts, this prestigious address adjacent to the majestic Orpheum Theatre boasts a new community music school and progressive amenities. In-house, enjoy the convenience of a residential concierge for greeting guests, package delivery and added security. Take advantage of the expansive landscaped terrace, fully equipped fitness centre, lounge plus meeting rooms and smart, eco-car sharing options.



TYPICAL FLOOR PLAN LEVELS 9 TO 30

SEYMOUR STREET NORTH





affordable opportunities such as Capitol are rare. Wall Financial Management is proven and renowned for bringing quality and real value to downtown. Capitol Residences are designed to maximize the potential of both your investment and your lifestyle.

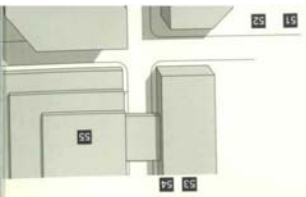
VIEWS Unbeatable Vancouver views surround you on every level. At 43 storeys, homes at Capitol are open to unobstructed views over the city, False Creek, North Shore, West End and beyond.

The Capitol Collection

Premium residences on levels 31 – 43 command a sweeping vantage with views from downtown to Coal Harbour and Stanley Park, across English Bay and over False Creek. Beautifully appointed, each Capitol Collection residence includes soaring over-height ceilings, individually controlled air conditioning, top-of-the-line GE Monogram Collection stainless steel appliances and stunning Blanco and American Standard finishes.

VALUE • MARCH 3
 BE GLAD YOU WAITED





CENTRE STAGE Sophistication and style meet here at the cultural heart of Vancouver. Living is front-row centre at Capitol Residences on Seymour, just steps from Robson Street.



**SEE IT NOW!
SAVE YOUR MONEY
FOR MARCH 3**

PERFORMANCE The soundest investments are made with complete confidence. The Developer's unparalleled reputation is built on a legacy of enduring success. Their experience with developing thousands of premier Vancouver condominium residences and prestigious hotels is reflected in every detail of Capitol.



QUALITY Landmark design and impeccable details define the Capitol look and feel. Exquisite interiors by Vancouver's acclaimed BYU Design feature distinctive millwork, sleek flat-panel cabinetry, luxurious marble flooring and tub surrounds, granite and limestone countertops. At Capitol, standard features are all penthouse-worthy appointments in your choice of two sumptuous colour schemes – Orpheum or Robson.

SEE IT NOW - PREVIEWING TODAY!

PERFORMANCE Your streamlined kitchen boasts stylish built-in storage, smooth granite countertop and a multi-functional island. A superb collection of coordinating GE Profile stainless steel appliances includes a gas cooktop, and sleek American Standard fixtures complete the gourmet setting. In the bath, the space is opulent, with polished marble floors and tub surround, over-the-counter basin and contemporary fixtures.

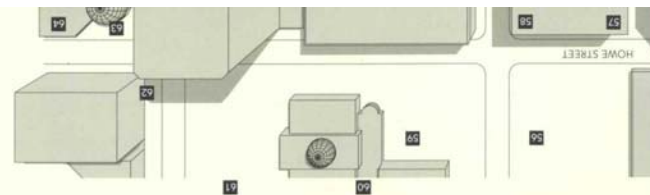
SAVE YOUR MONEY FOR MARCH 3



SEE IT NOW
SAVE YOUR MONEY
FOR MARCH 3



CONFIDENCE The soundest investments are made with complete confidence. The Developer's unparalleled reputation is built on a legacy of enduring success. Their experience with developing thousands of premier Vancouver condominium residences and prestigious hotels is reflected in every detail of Capitol.



Landmark design and impeccable details define the Capitol look and feel. Exquisite interiors by the acclaimed BYU Design feature distinctive millwork, sleek flat-panel cabinetry, luxurious marble and tub surrounds, granite and limestone countertops. At Capitol, standard features are all worthy appointments in your choice of two sumptuous colour schemes - Orpheum or Robson.

PERFORMANCE Your streamlined kitchen boasts stylish built-in storage, smooth granite countertops and a multi-functional island. A superb collection of coordinating GE Profile stainless steel appliances including a gas cooktop, and sleek American Standard fixtures complete the gourmet setting. In the bath, the mood is opulent, with polished marble floors and tub surround, over-the-counter basin and contemporary fixtures.

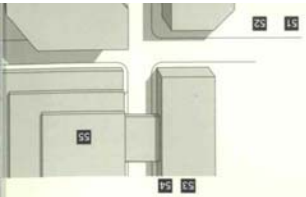
SEE IT NOW - PREVIEWING TODAY!

SAVE YOUR MONEY FOR MARCH 3



BCCONDOS.NET





CENTRE STAGE Sophistication and style meet here at the cultural heart of Vancouver. Living is front-row centre at Capitol Residences on Seymour, just steps from Robson Street and surrounded by the finest dining, shopping,



**SEE IT NOW!
SAVE YOUR MONEY
FOR MARCH 3**

PERFORMANCE The soundest investments are made with complete confidence. The Developer's unparalleled reputation is built on a legacy of enduring success. Their experience with developing thousands of premier Vancouver condominium residences and prestigious hotels is reflected in every detail of Capitol.

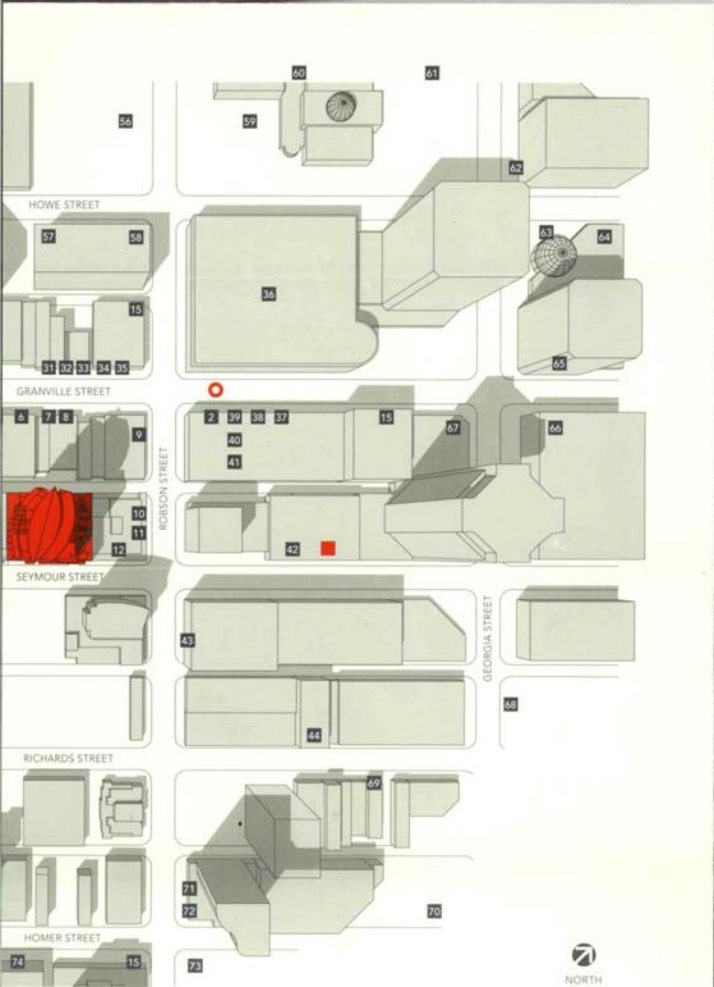


QUALITY Landmark design and impeccable details define the Capitol look and feel. Exquisite interiors by Vancouver's acclaimed BYU Design feature distinctive millwork, sleek flat-panel cabinetry, luxurious marble flooring and tub surrounds, granite and limestone countertops. At Capitol, standard features are all penthouse-worthy appointments in your choice of two sumptuous colour schemes – Orpheum or Robson.

SEE IT NOW - PREVIEWING TODAY!

PERFORMANCE Your streamlined kitchen boasts stylish built-in storage, smooth granite countertops and a multi-functional island. A superb collection of coordinating GE Profile stainless steel appliances includes a gas cooktop, and sleek American Standard fixtures complete the gourmet setting. In the bath, the mood is opulent, with polished marble floors and tub surround, over-the-counter basin and contemporary fixtures.

SAVE YOUR MONEY FOR MARCH 3



CONFIDENCE The soundest investments are made with complete confidence. The Developer's unparalleled reputation is built on a legacy of enduring success. Their experience with developing thousands of premier Vancouver condominium residences and prestigious hotels is reflected in every detail of Capitol.



Electric Avenue at Paramount Place



Hudson



Yaletown Park



Sheraton Wall Centre

FROM THE TEAM THAT INTRODUCED ELECTRIC AVENUE, HUDSON, YALETOWN PARK AND OF COURSE WALL CENTRE.

SAVE YOUR MONEY FOR MARCH 3

CAPITOLRESIDENCES.COM 604 688 0819

Noon - 5pm Daily Except Fridays. Presentation Centre: 757 Seymour St (Off Robson)

210 HOMES UNDER \$500,000

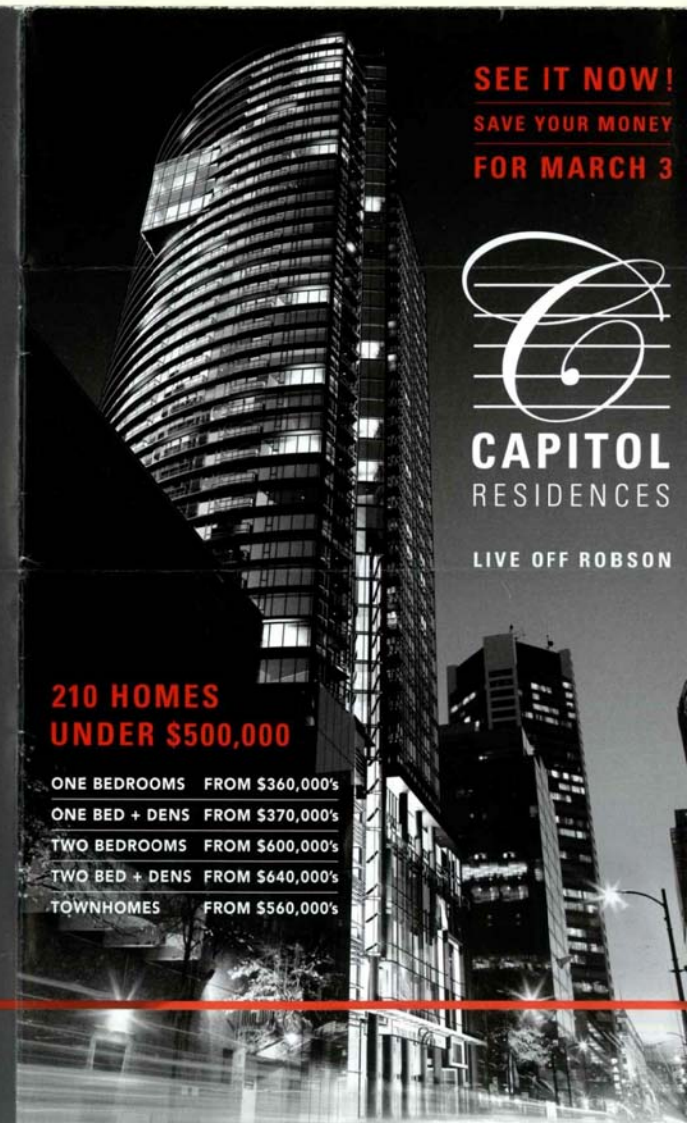
- ONE BEDROOMS FROM \$360,000's
- ONE BED + DENS FROM \$370,000's
- TWO BEDROOMS FROM \$600,000's
- TWO BED + DENS FROM \$640,000's
- TOWNHOMES FROM \$560,000's

**SEE IT NOW!
SAVE YOUR MONEY
FOR MARCH 3**



**CAPITOL
RESIDENCES**

LIVE OFF ROBSON



41 Winners 42 Blazo Coffee 43 TELUS Store 44 Kingston TapHouse & Grille 45 Lucy Mae Brown 46 Contemporary Art Gallery 47 Nesters Market 48 HeadSpace Salon 49 The Screening Room 50 Creative Design Works 51 The Bed Room Salon 52 Axis Decorative Arts 53 Famous Rogers Paramount Creams 54 Earls 55 Vancouver Law Courts 56 Robson Square 57 Urban Barn 58 Chapters 59 Vancouver Art Gallery 60 Caffe Artigiano 61 Hotel Fairmont Vancouver (Gucci), Absolute Spa, Louis Vuitton 62 Senns Bakery 63 Pacific Centre 64 Four Seasons Hotel 65 Holt Renfrew 66 The Bay 67 London Drugs 68 La Raffinage Spirit Spa 69 Scratch Records 70 The Centre for the Performing Arts 71 Ania Restaurant & Lounge 72 Jimmy's TapHouse 73 Vancouver Public Library 74 Mandala Boutique 75 Subzee Cafe 76 Harrison Galleries 77 Chritz & Company 78 Seattle's Best Coffee

The Developer reserves the right to make modifications and changes to the information contained herein. Photos and map are representational and are not accurate. Prices, dimensions, sizes, specifications, layouts and materials are approximate only and subject to change without notice. E.A.O.E. This is not an offering for sale.



BCCONDOS.NET



ENCE: The soundest investments are made with complete confidence. The Developer's unparalleled
 is built on a legacy of enduring success. Their experience with developing thousands of
 Vancouver condominium residences and prestigious hotels is reflected in every detail of Capitol.



Electric Avenue at Paramount Place



Hudson



Yaletown Park

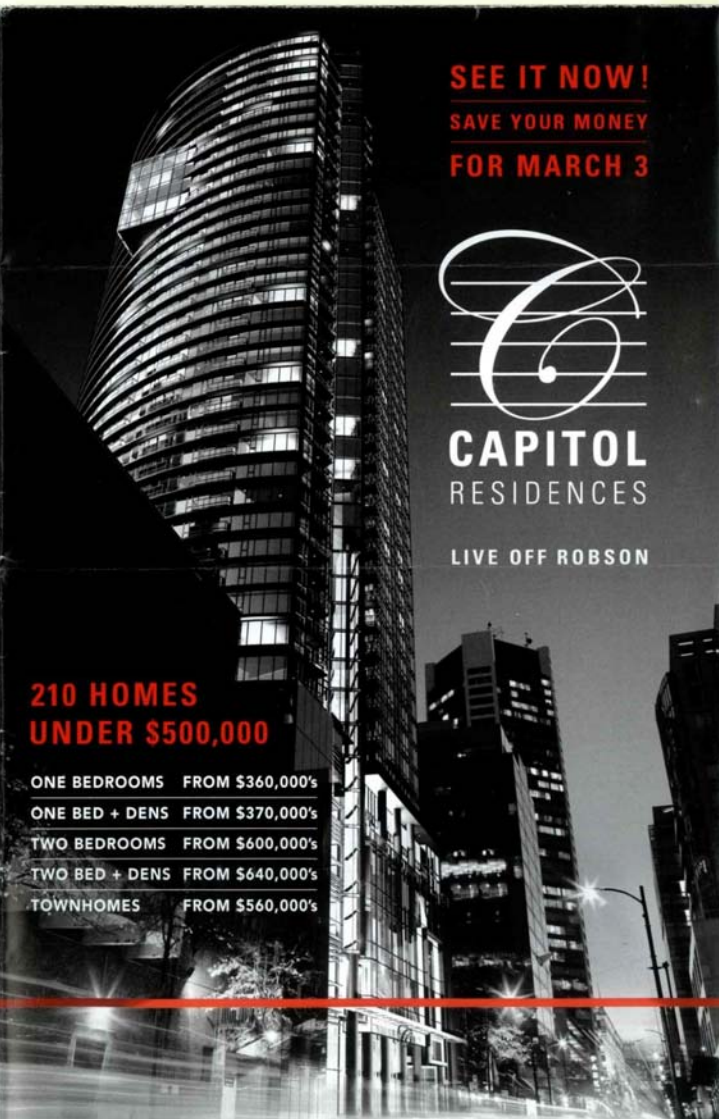


Sheraton Wall Centre

FROM THE TEAM THAT INTRODUCED ELECTRIC AVENUE,
 HUDSON, YALETOWN PARK AND OF COURSE WALL CENTRE.

SAVE YOUR MONEY FOR MARCH 3
CAPITOLRESIDENCES.COM 604 688 0819

Noon - 5pm Daily Except Fridays. Presentation Centre: 757 Seymour St (Off Robson)



SEE IT NOW!
SAVE YOUR MONEY
FOR MARCH 3



CAPITOL
RESIDENCES

LIVE OFF ROBSON

210 HOMES
UNDER \$500,000

ONE BEDROOMS FROM \$360,000's

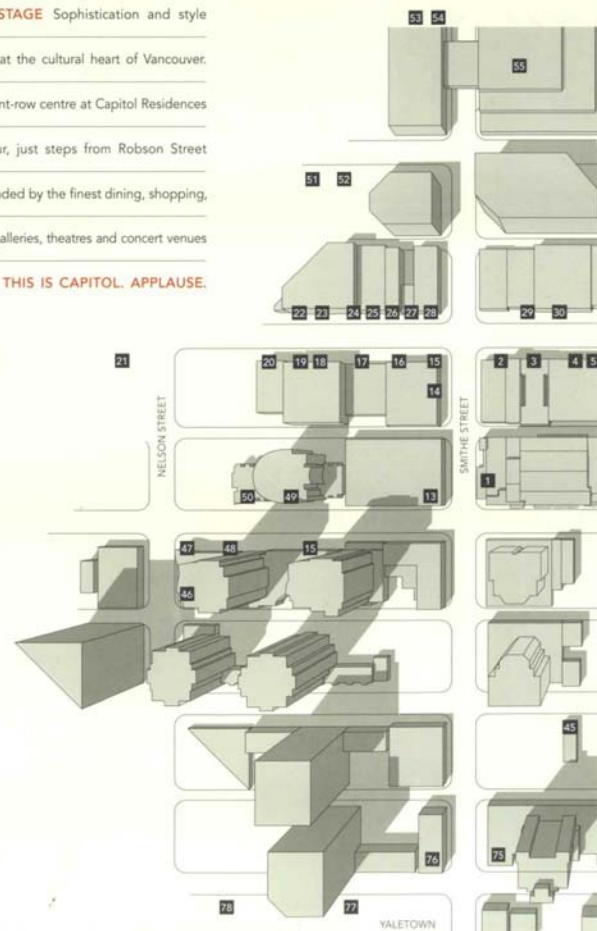
ONE BED + DENS FROM \$370,000's

TWO BEDROOMS FROM \$600,000's

TWO BED + DENS FROM \$640,000's

TOWNHOMES FROM \$560,000's

CENTRE STAGE Sophistication and style
 meet here at the cultural heart of Vancouver.
 Living is front-row centre at Capitol Residences
 on Seymour, just steps from Robson Street
 and surrounded by the finest dining, shopping,
 hot spots, galleries, theatres and concert venues
 in the city. **THIS IS CAPITOL. APPLAUSE.**



- Presentation Centre ● Future Canada Line Station Vancouver City Centre (5th & Robson) ● 1 The Orpheum Theatre & The Vancouver Symphony Orchestra
- 2 Café Crêpe 3 Commodore Ballroom 4 Sparo 5 Golden Age Collectables & Antiques 7 David Gordon 8 Commodore Lanes & Billiards 9 Lamson Pub
- 10 Flight Centre 11 India Gate 12 Chai Thai Cuisine 13 Staples 14 Cabi's Irish Pub & Restaurant 15 Starbucks 16 Vogue Theatre 17 The Royal 18 Republic
- 19 Oh My Goddard Gallery 20 Sonomama 21 Sana's Restaurant and Lounge 22 Caprice Lounge & Grill 23 The Grenville Room 24 Tom Lee Music
- 25 The Sony Store 26 Speakeasy Bar & Grill 27 Tonic Nightclub 28 Centro 29 Plaza Club 30 Empire Theatres/Grenville Cinemas 31 Cherry Bomb 32 John Fluevog 33 Kito Japanese House 34 The Record Shop 35 Charlier's Music City 36 Sears 37 Bedo 38 Mantique 39 Eco Outdoor Sports 40 Future Shop

we warrant the right to make modifications and changes to the information contained herein.
 All information provided and is not intended to constitute an offer. All information is subject to change without notice. © 2007. This is not an offering for sale.



BCCONDOS.NET

