

09-200

STRATA PLAN OF LOT "D"
BLOCK 82 DISTRICT LOT 541
GROUP 1 N.W.D. PLAN 19417

FIRST SHEET, SHEET 1 OF 24 SHEETS

STRATA PLAN LMS 2586

REF. NO. BK 335106

B.C.G.S. 926.025
CITY OF VANCOUVER

STRATA PLAN LMS 2586 deposited and registered
in the Land Title Office at New Westminster, B.C.
This 22 day of October, 1996

[Signature]
Assistant Deputy Registrar

SCALE 1:500



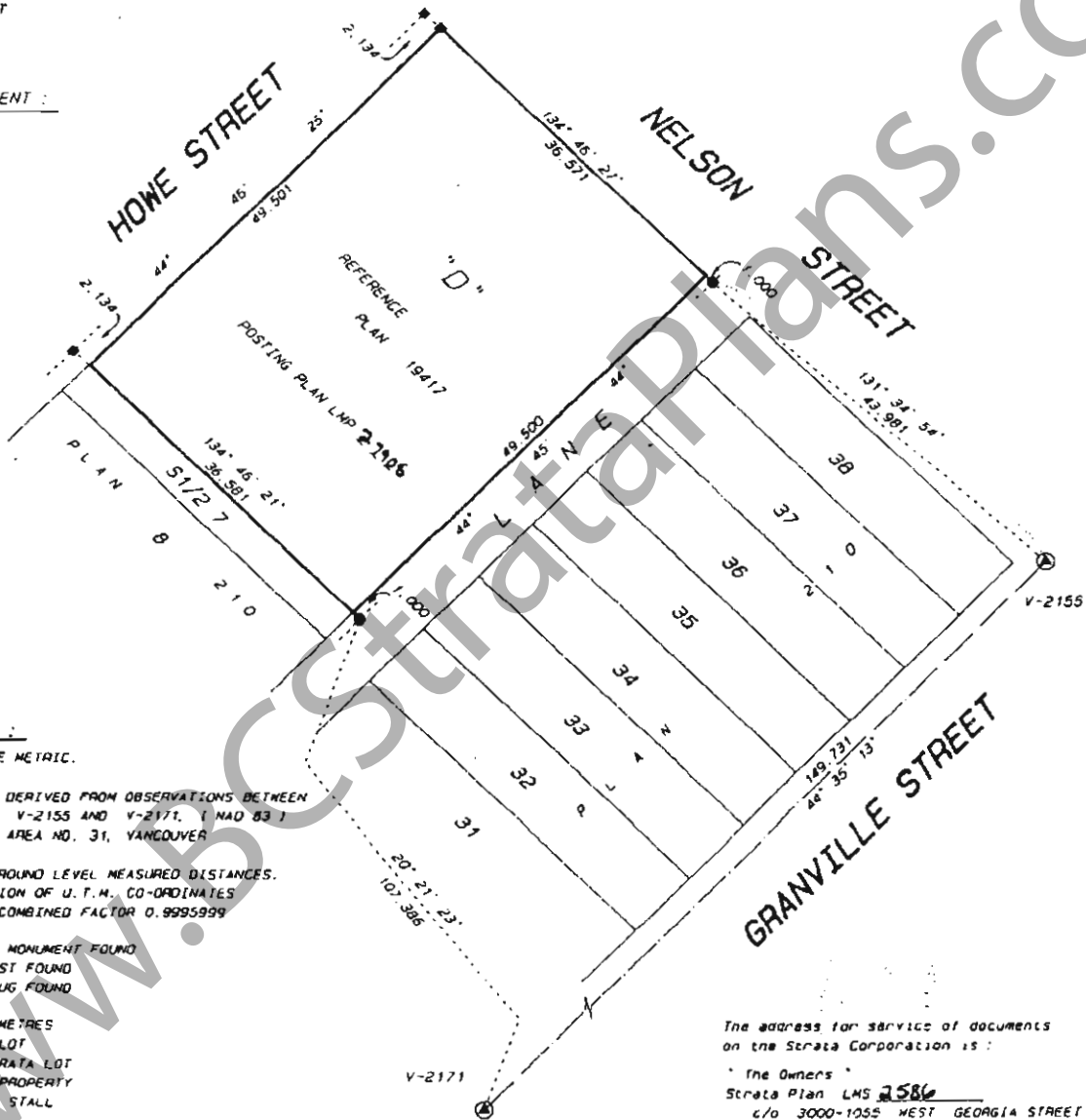
CIVIC ADDRESS :

1010 HOWE STREET
VANCOUVER, B.C.

NAME OF DEVELOPMENT :

FORTUNE HOUSE

THIS PLAN LIES WITHIN THE GREATER
VANCOUVER REGIONAL DISTRICT.



LEGEND :

ALL DIMENSIONS ARE METRIC.

GRID BEARINGS ARE DERIVED FROM OBSERVATIONS BETWEEN
CONTROL MONUMENTS V-2155 AND V-2171. (NAD 83)
INTEGRATED SURVEY AREA NO. 31, VANCOUVER

THIS PLAN SHOWS GROUND LEVEL MEASURED DISTANCES.
PRIOR TO COMPUTATION OF U.T.M. CO-ORDINATES
MULTIPLY BY MEAN COMBINED FACTOR 0.9995999

- ⊙ = CONTROL MONUMENT FOUND
- = IRON POST FOUND
- = LEAD PLUG FOUND
- m² = SQUARE METRES
- S.L. = STRATA LOT
- PT. = PART STRATA LOT
- C.P. = COMMON PROPERTY
- C = PARKING STALL
- B = BALCONY
- D = ROOFDECK
- = LEAD PLUG PLACED

NOTE: PARKING STALLS, BALCONIES AND ROOFDECKS
ARE LIMITED COMMON PROPERTY FOR USE OF
THE STRATA LOTS INDICATED.
(EXAMPLE: C - 1, B - 9, D - 131)

The address for service of documents
on the Strata Corporation is :

The Owners
Strata Plan LMS 2586
c/o 3000-1055 WEST GEORGIA STREET
VANCOUVER, B.C.
V6E 3R3

I, WILLIAM P. WONG, of Burnaby, B.C., British Columbia
Land Surveyor, hereby certify that the Building erected
on the parcel described above is wholly within the external
boundaries of that parcel.

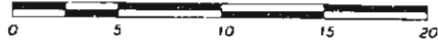
Dated at Richmond, B.C.
This 3RD day of APRIL, 1996.

[Signature] W.P. Wong B.C.L.S. (#697)

MATSON, PECK & TOPLISS
SURVEYORS AND ENGINEERS
210-8171 COOK ROAD
RICHMOND, B.C. V6V 3T8
(ph) 270-9331
(fax) 270-4137

JOB NO. V - 11671

SCALE 1:250



STRATA PLAN LMS 2586

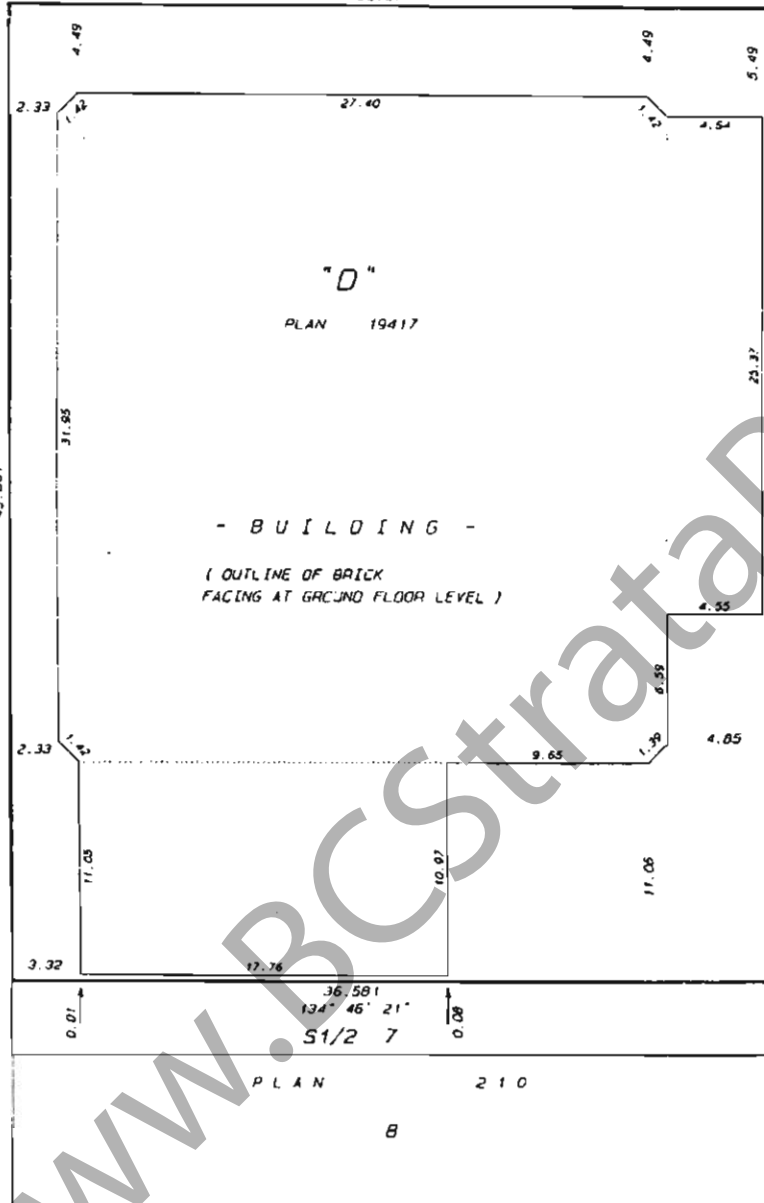


NELSON STREET

134° 46' 27"
36.571

HOWE STREET

44° 45' 25"
49.501



- BUILDING -
(OUTLINE OF BRICK
FACING AT GROUND FLOOR LEVEL)

LANE

38

37

36

35

34

33

32

31

210

P L A N

PLAN 210

B

MATSON, PECK & TOPLISS
SURVEYORS AND ENGINEERS
210-8171 COOK ROAD
RICHMOND, B.C. V6Y 3T8
(ph) 270-9331
(fax) 270-4137

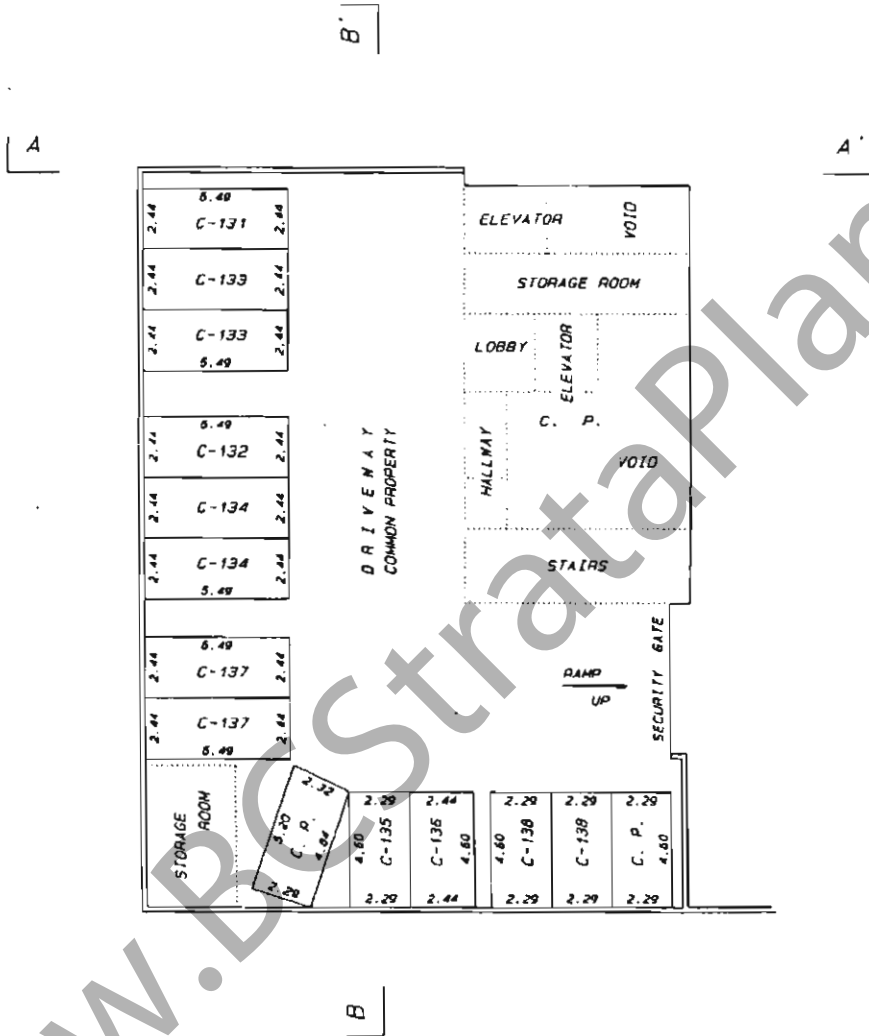
JOB NO. V - 11671

DATE April 3/96 WPH B.C.L.S.

SCALE 1:200



STRATA PLAN LMS 2586



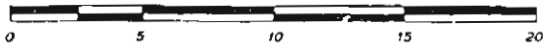
www.BCStrataPlans.com

MATSON, PECK & TOPLISS
 SURVEYORS AND ENGINEERS
 210-8171 COOK ROAD
 RICHMOND, B.C. V6Y 3T8
 (ph) 270-9331
 (fax) 270-4137

JOB NO. V - 11671

DATE April 3/96 WPW B.C.L.S.

SCALE 1: 200



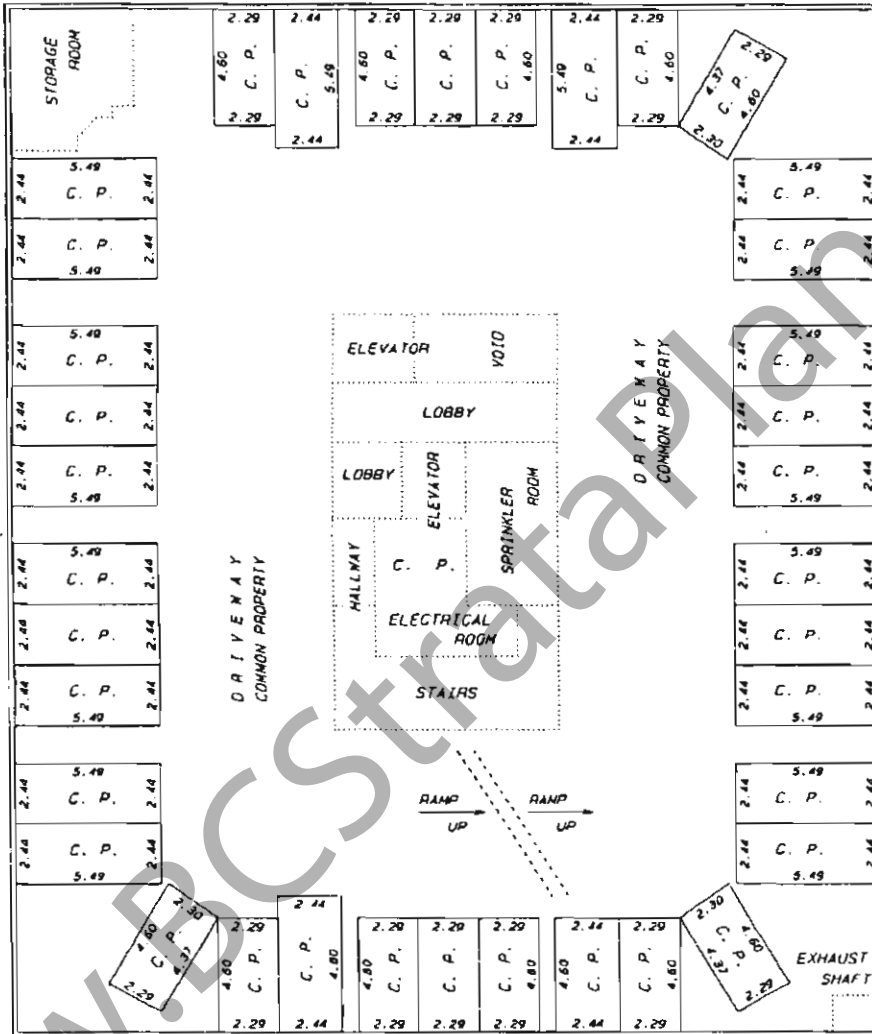
STRATA PLAN LMS 2586



A

B

A



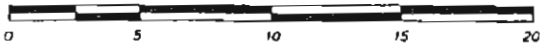
B

MATSON, PECK & TOPLISS
 SURVEYORS AND ENGINEERS
 210-8171 COOK ROAD
 RICHMOND, B.C. V6Y 3T8
 (ph) 270-9331
 (fax) 270-4137

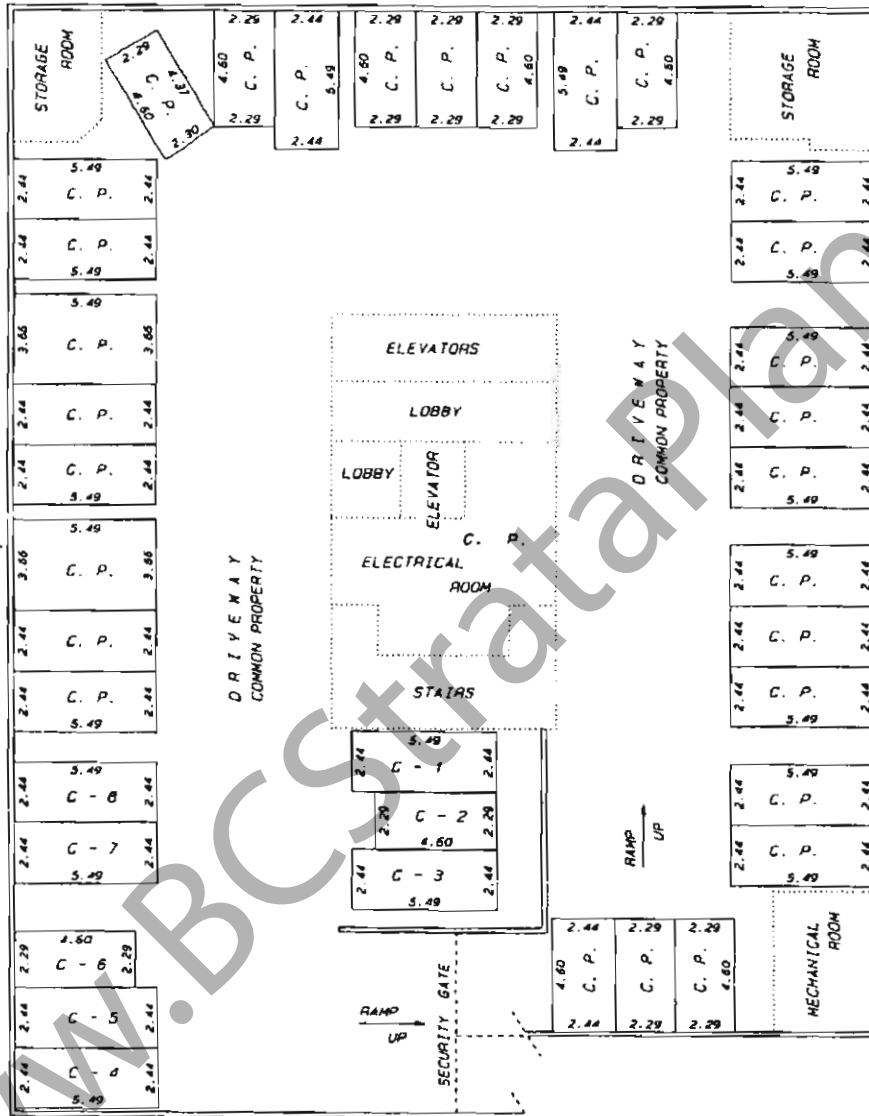
JOB NO. V - 11671

DATE April 3/96 W.P.W. B.C.L.S.

SCALE 1:200



STRATA PLAN LMS 2586

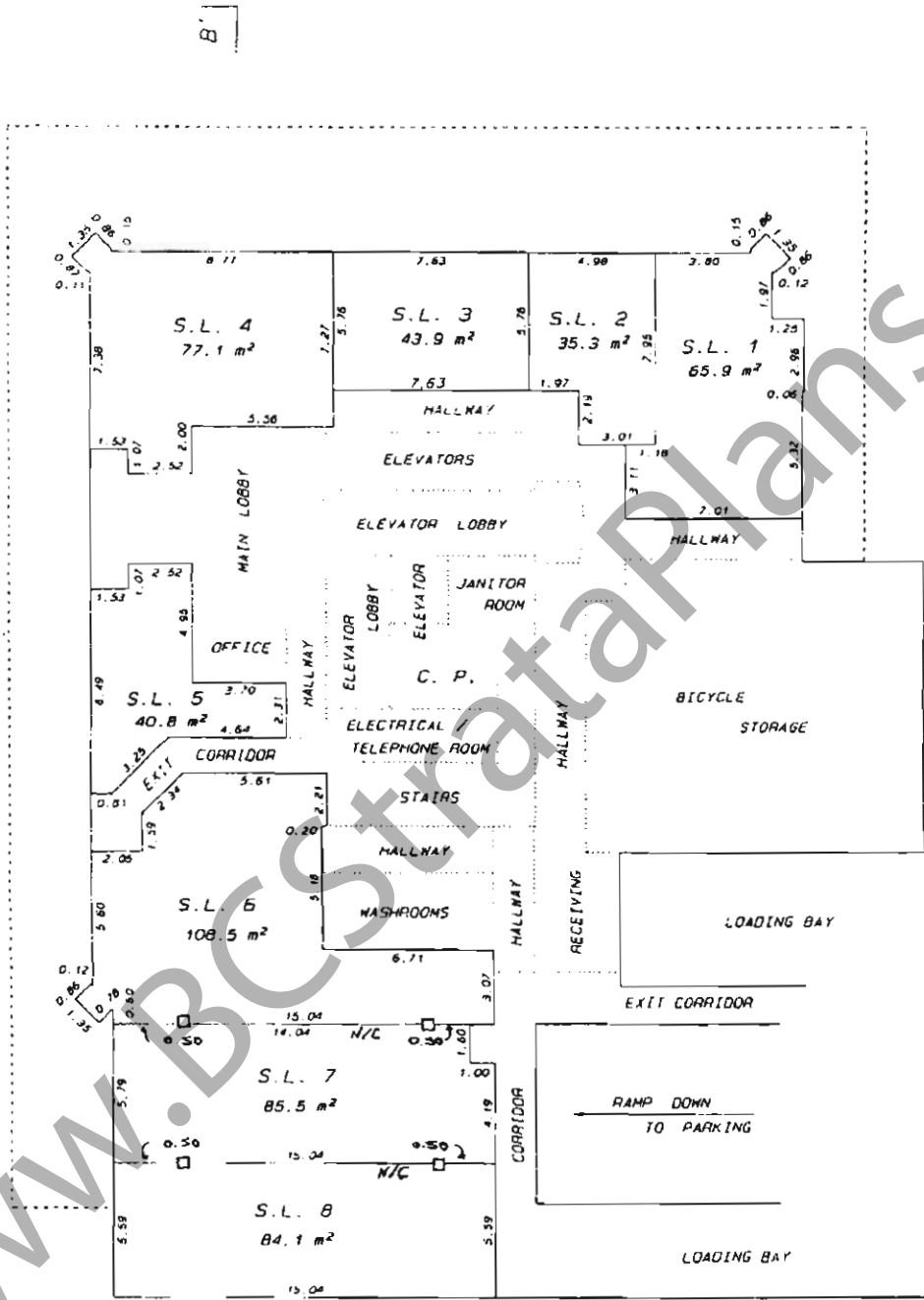


MATSON, PECK & TOPLISS
 SURVEYORS AND ENGINEERS
 210-8171 COOK ROAD
 RICHMOND, B.C. V6Y 3T8
 (on) 270-9331
 (fax) 270-4137

JOB NO. V - 11671

DATE April 3/96. W.P.W. B.C.L.S.

STRATA PLAN LMS2586



NOTE:
N/C INDICATES WALL NOT CONSTRUCTED

MATSON, PECK & TOPLISS
 SURVEYORS AND ENGINEERS
 210-8171 COOK ROAD
 RICHMOND, B.C. V6Y 3T8
 (ph) 270-9331
 (fax) 270-4137

JOB NO. V - 11671

DATE April 3/96 WPN B.C.L.S.

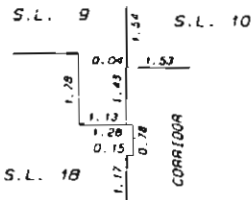
SCALE 1: 200



STRATA PLAN LMS 2586

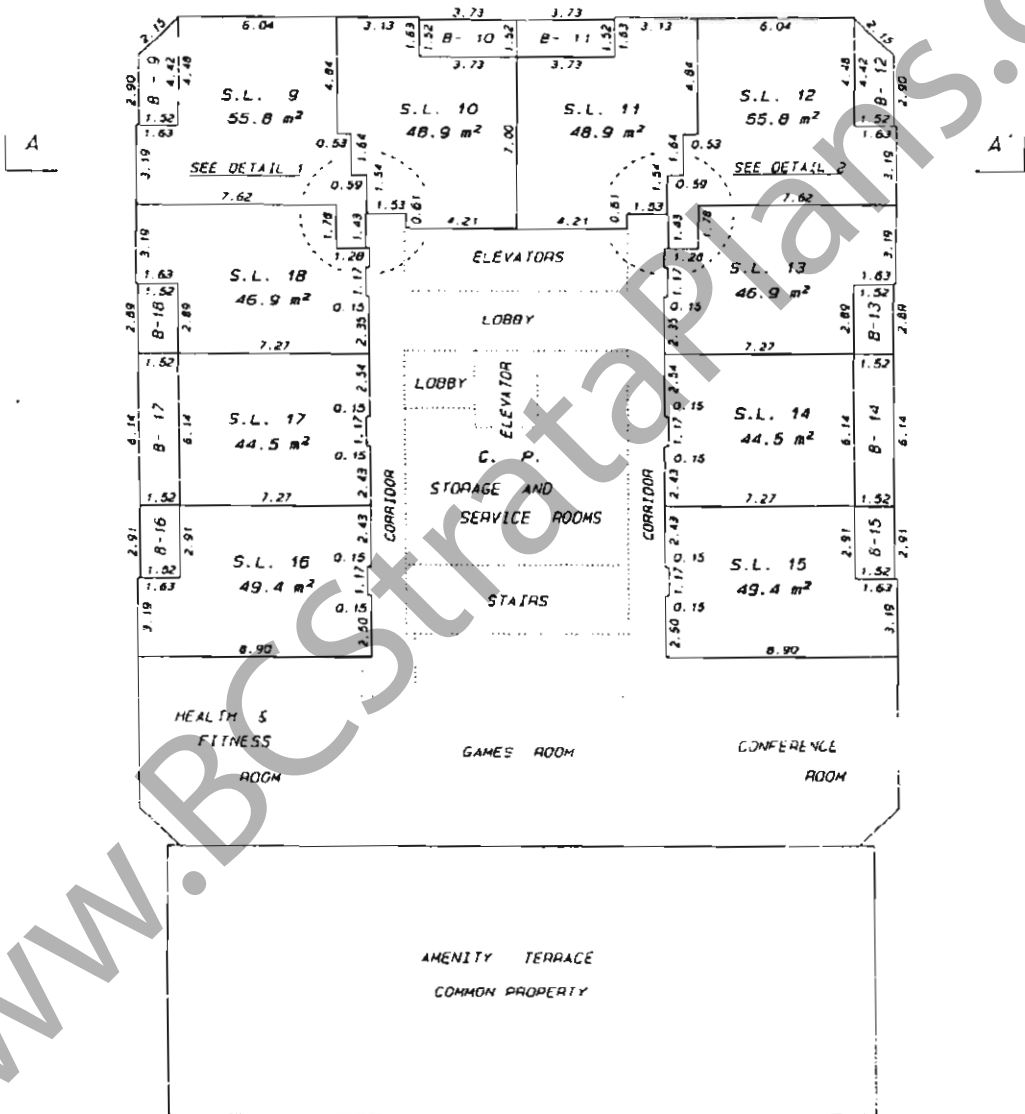
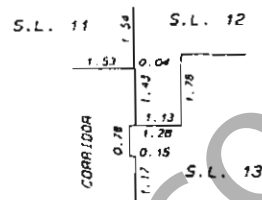
DETAIL 1

SCALE 1: 125



DETAIL 2

SCALE 1: 125



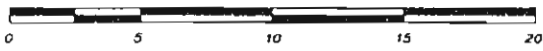
WWW.BCstrataplans.com

MATSON, PECK & TOPLISS
SURVEYORS AND ENGINEERS
210-817 COOK ROAD
RICHMOND, B.C. V6Y 3T8
(ph) 270-9331
(fax) 270-4137

JOB NO. V - 11671

DATE April 3/96 W.P.W. B.C.L.S.

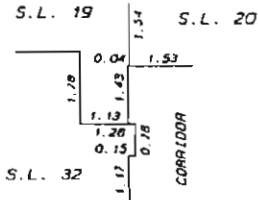
SCALE 1: 200



STRATA PLAN LMS 2586

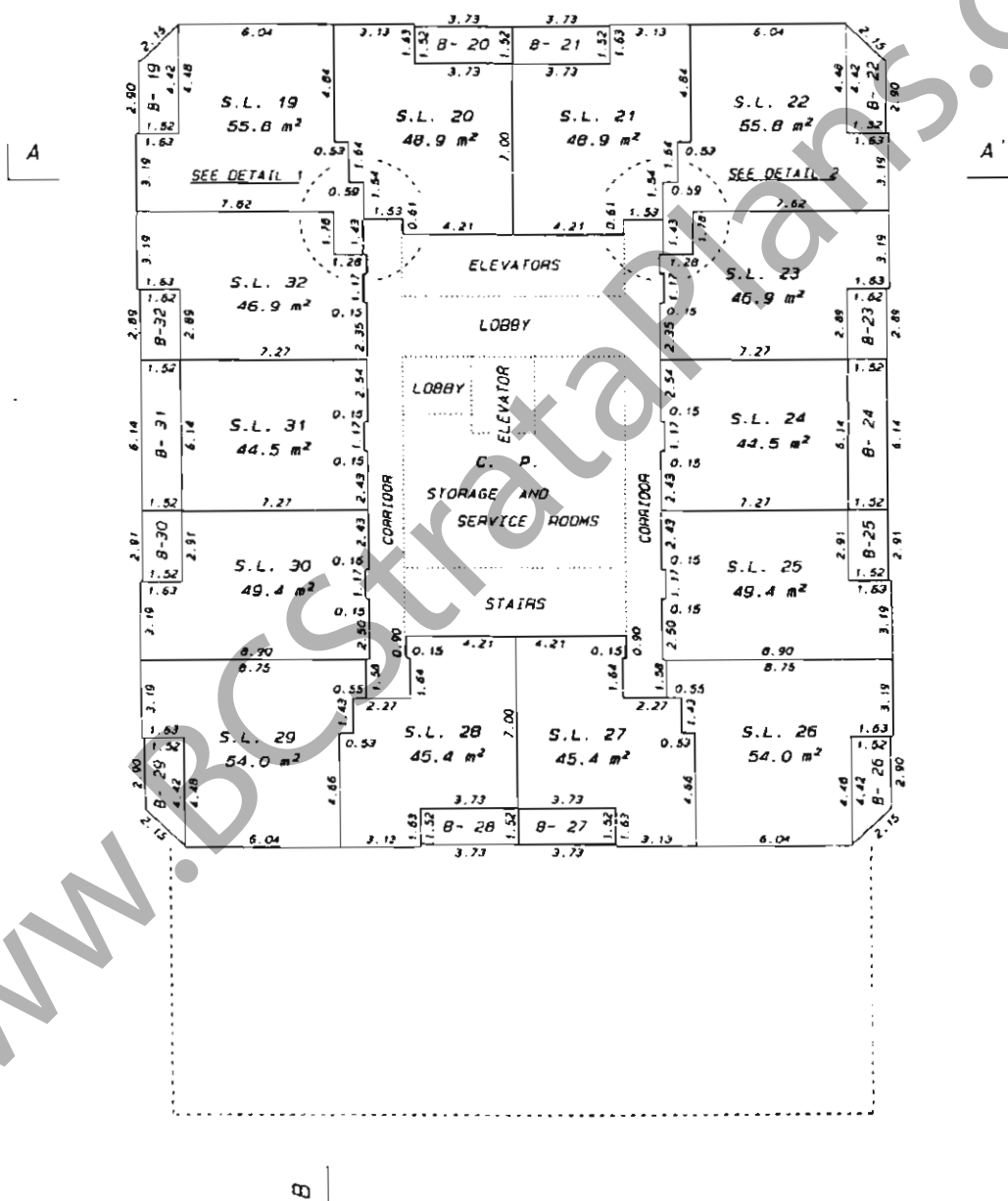
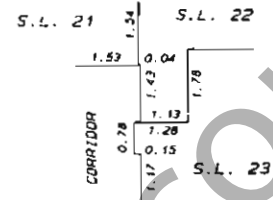
DETAIL 1

SCALE 1: 125



DETAIL 2

SCALE 1: 125

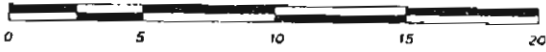


MATSON, PECK & TOPLISS
SURVEYORS AND ENGINEERS
210-B171 COOK ROAD
RICHMOND, B.C. V6Y 3T8
lph) 270-9331
lfax) 270-4137

JOB NO. V - 11671

DATE April 13/96 WPW B.C.L.S.

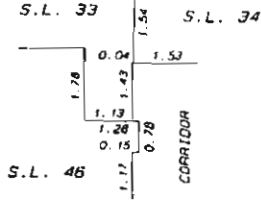
SCALE 1:200



STRATA PLAN LMS 2586

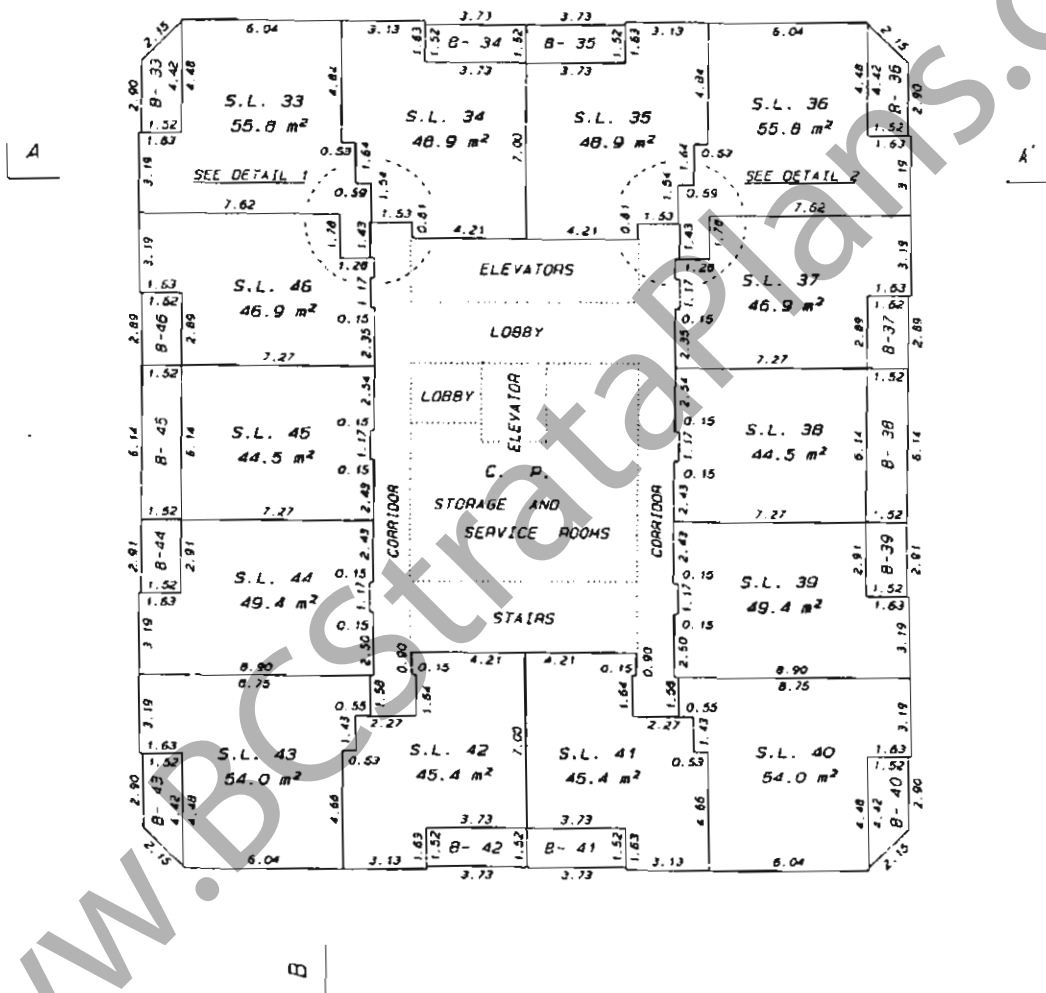
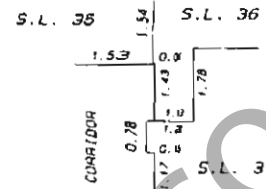
DETAIL 1

SCALE 1:125



DETAIL 2

SCALE 1:125



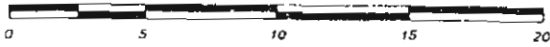
WWW.BCSTATESURVEYORS.COM

MATSON, PECK & TOPLISS
SURVEYORS AND ENGINEERS
210-B171 COOK ROAD
RICHMOND, B.C. V6Y 3T8
(ph) 270-9331
(fax) 270-4137

JOB NO. V - 11671

DATE April 3/96 WPN B.C.L.S.

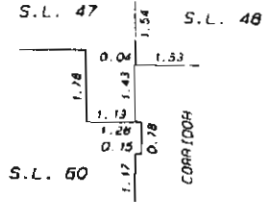
SCALE 1:200



STRATA PLAN LMS 2586

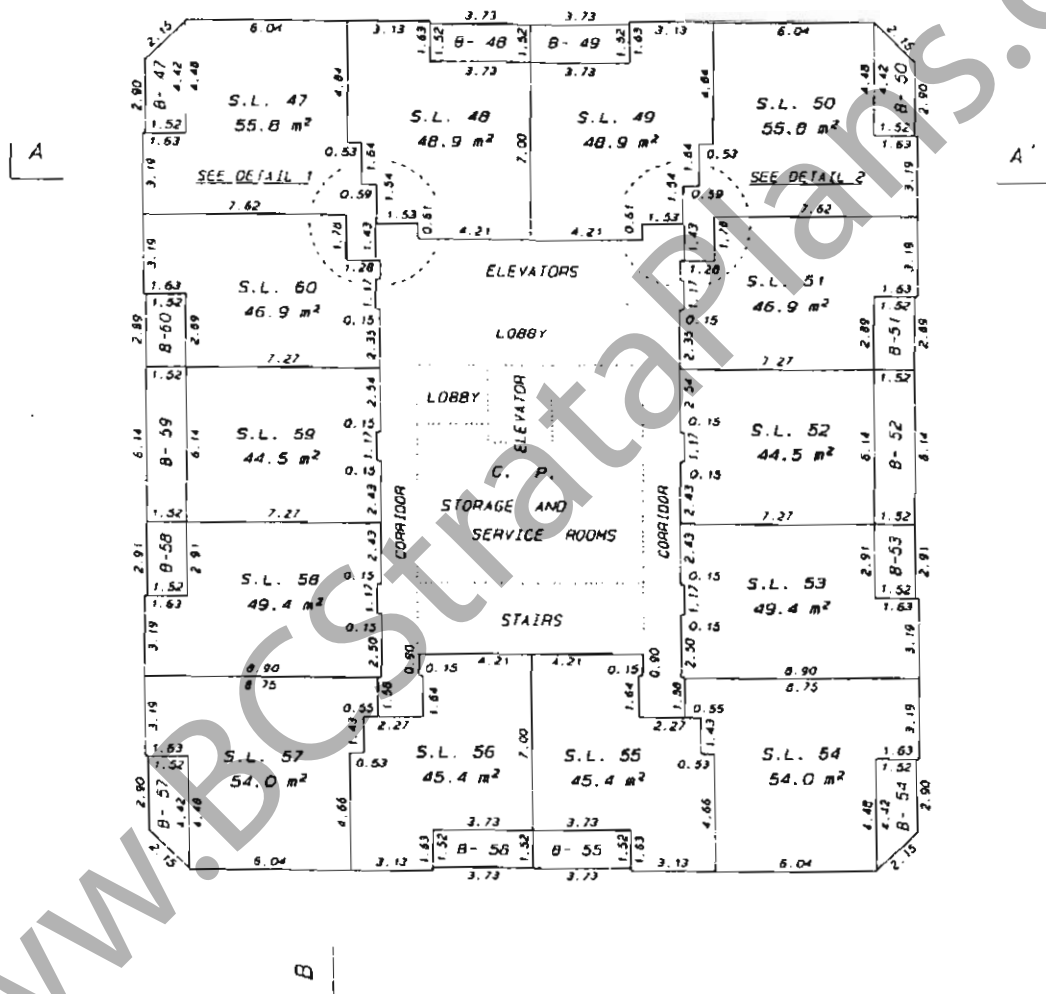
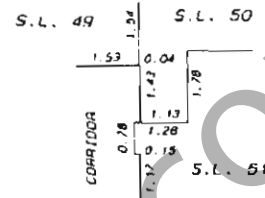
DETAIL 1

SCALE 1:125



DETAIL 2

SCALE 1:125



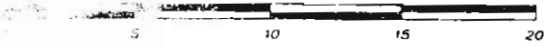
MATSON, PECK & TOPLISS
SURVEYORS AND ENGINEERS
210-8171 COOK ROAD
RICHMOND, B.C. V6Y 3T8
(ph) 270-9331
(fax) 270-4137

JOB NO. V - 11671

DATE April 3/96. W/PW R.C.L.S.

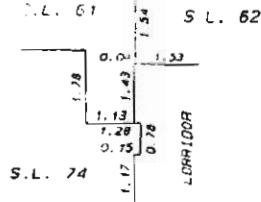
STRATA PLAN LMS 2580

SCALE 1:200



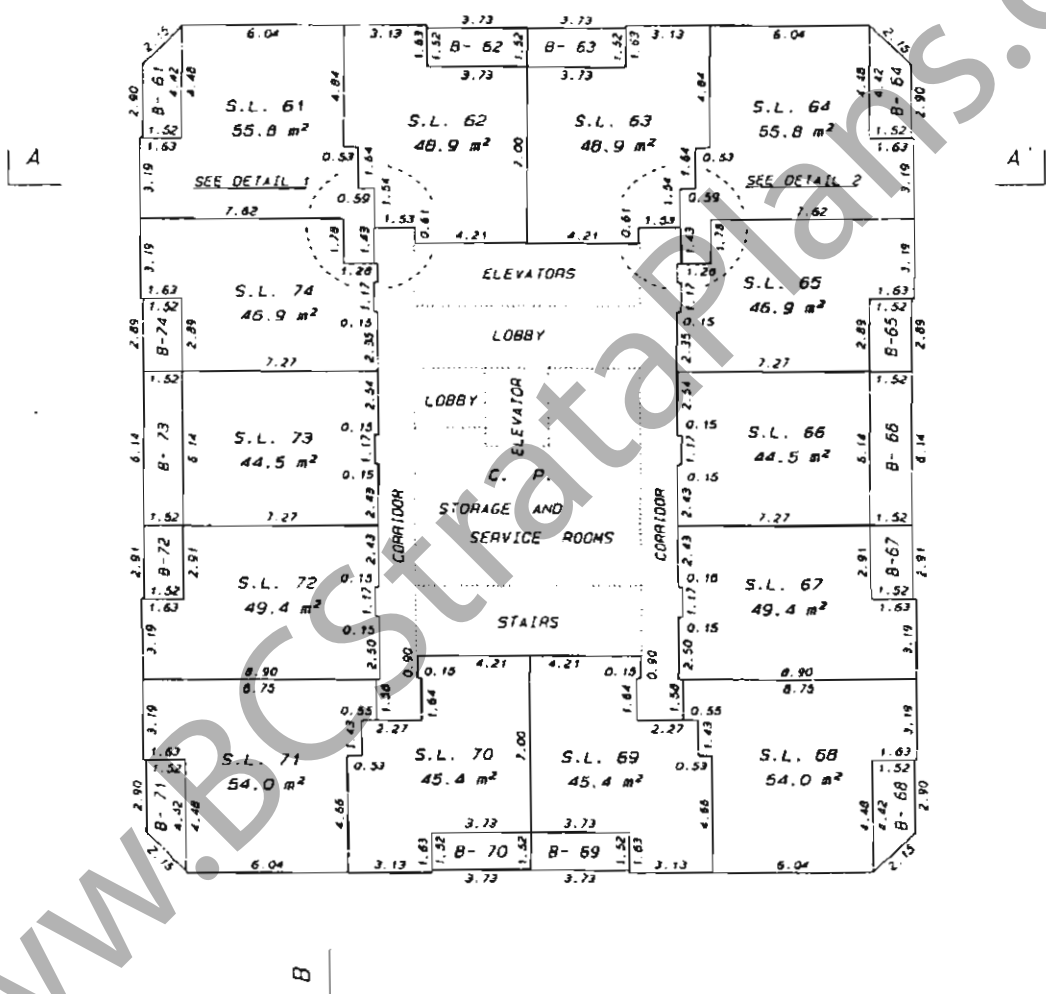
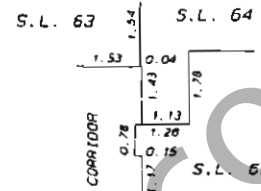
DETAIL 1

SCALE 1:125

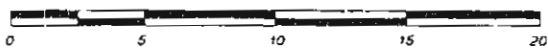


DETAIL 2

SCALE 1:125



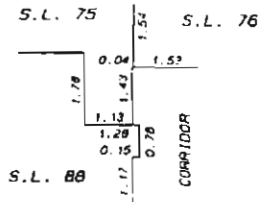
SCALE 1: 200



STRATA PLAN LMS 2516

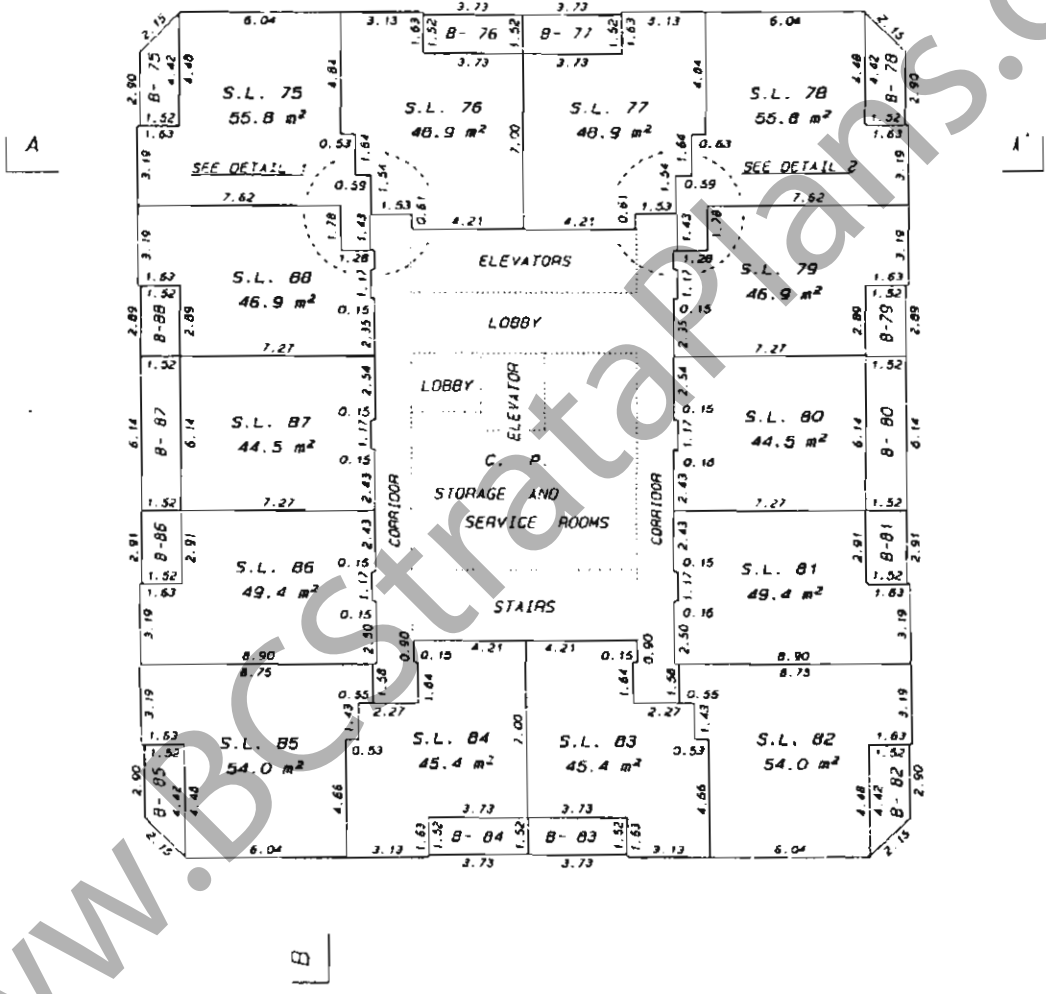
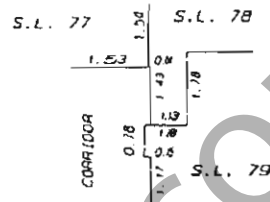
DETAIL 1

SCALE 1: 125



DETAIL 2

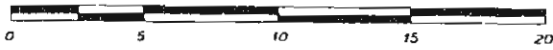
SCALE 1: 125



MATSON, PECK & TOPLISS
SURVEYORS AND ENGINEERS
210-8171 COOK ROAD
RICHMOND, B.C. V6Y 3T8
(ph) 270-9331
(fax) 270-4137
JOB NO. V - 11671

DATE April 3/96 NPN B.C.L.S.

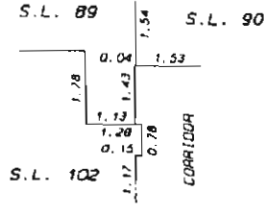
SCALE 1:200



STRATA PLAN LMS 2586

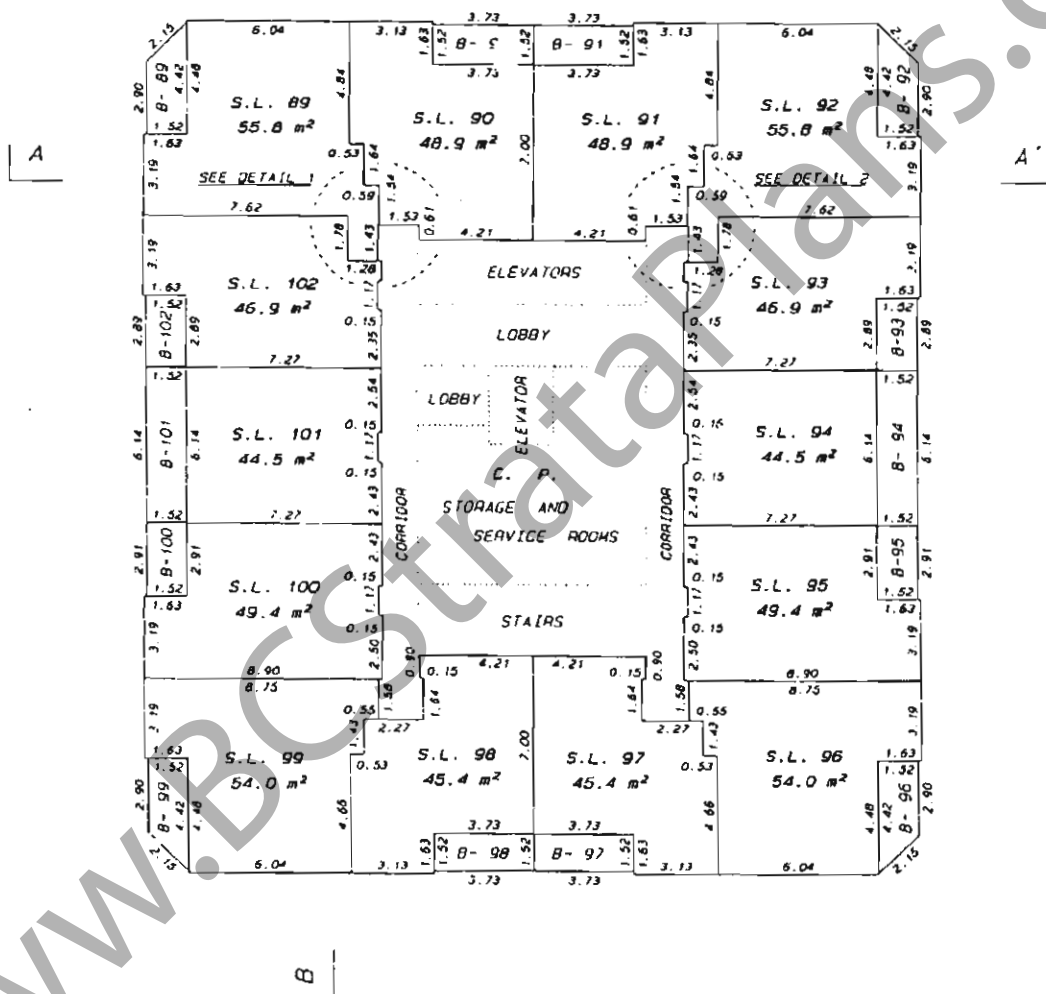
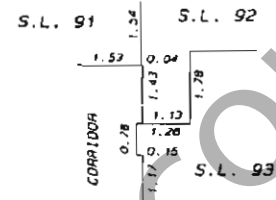
DETAIL 1

SCALE 1:125



DETAIL 2

SCALE 1:125

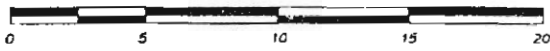


MATSON, PECK & TOPLISS
SURVEYORS AND ENGINEERS
210-8171 COOK ROAD
RICHMOND, B.C. V6Y 3T8
(tel) 270-9331
(fax) 270-4137

JOB NO. V - 11671

DATE April 3/90. WPH

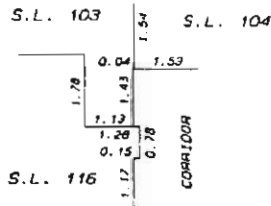
SCALE 1: 200



STRATA PLAN LMS 2586

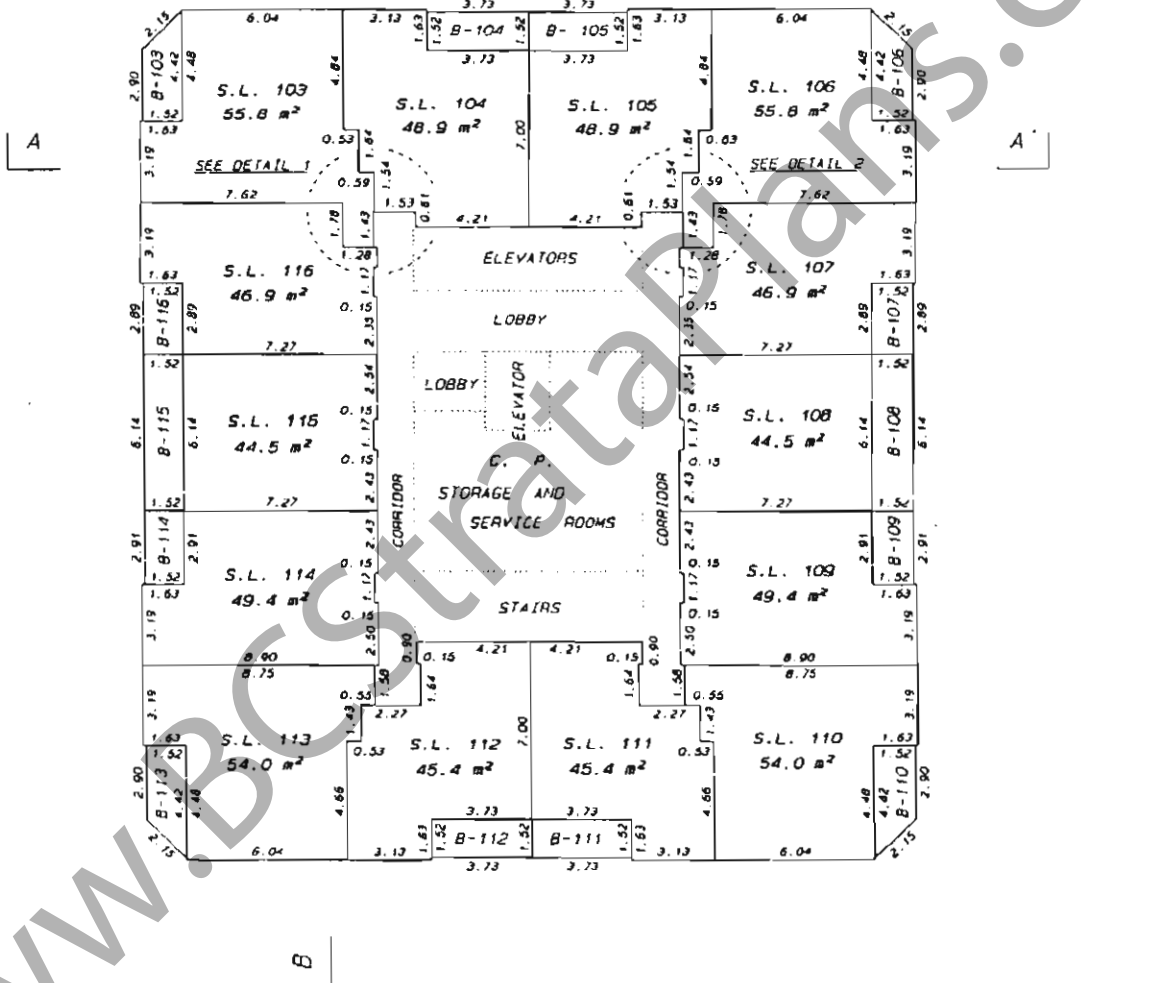
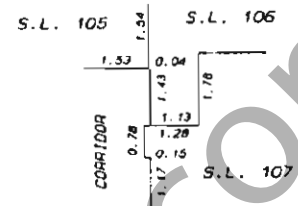
DETAIL 1

SCALE 1: 125



DETAIL 2

SCALE 1: 125

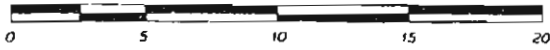


MATSON, PECK & TOPLISS
SURVEYORS AND ENGINEERS
210-B-171 COOK ROAD
RICHMOND, B.C. V6Y 3T8
(DN) 270-9331
(fax) 270-4137

JOB NO. V - 11671

DATE April 3/96 WPH B.C.L.S.

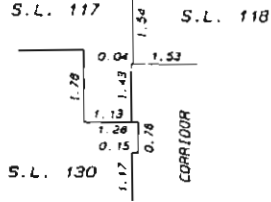
SCALE 1:200



STRATA PLAN LMS 258

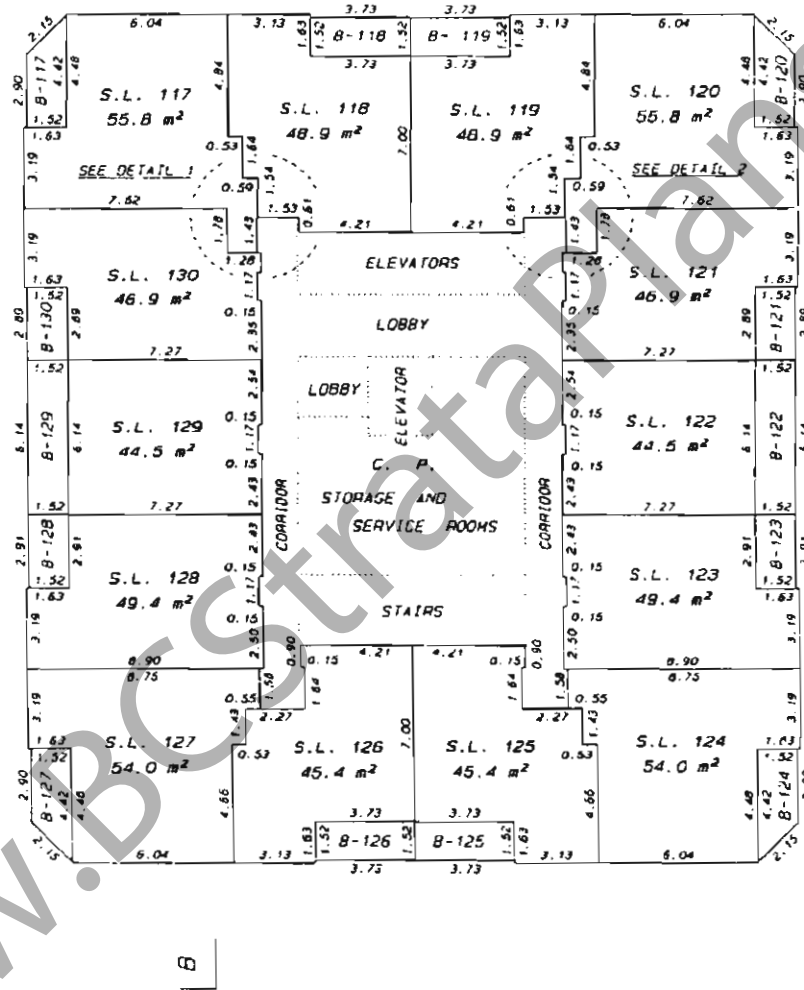
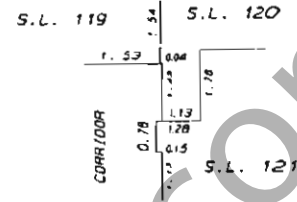
DETAIL 1

SCALE 1:125



DETAIL 2

SCALE 1:125



MATSON, PECK & TOPLISS

SURVEYORS AND ENGINEERS

210-8171 COOK ROAD

RICHMOND, B.C. V6Y 3T8

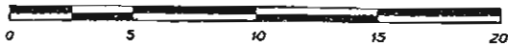
(PH) 270-9331

(FAX) 270-4137

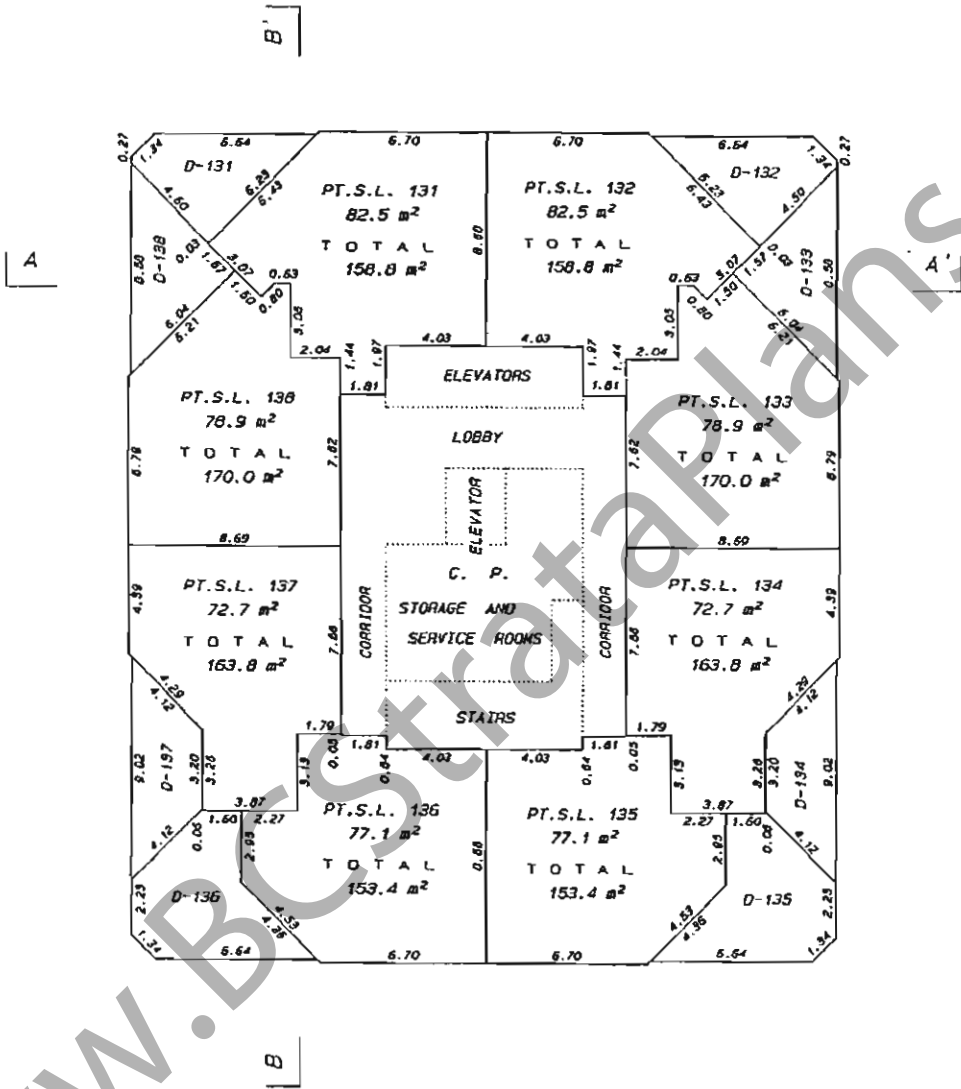
JOB NO. V - 11671

DATE April 3/96 W.P.W. B.C.L.S.

SCALE 1:200



STRATA PLAN LMS 2586



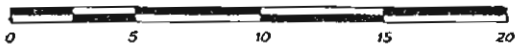
WWW.BSSTRATAPLANS.COM

MATSON, PECK & TOPLISS
 SURVEYORS AND ENGINEERS
 210-8171 COOK ROAD
 RICHMOND, B.C. V6Y 3T8
 (ph) 270-9331
 (fax) 270-4137

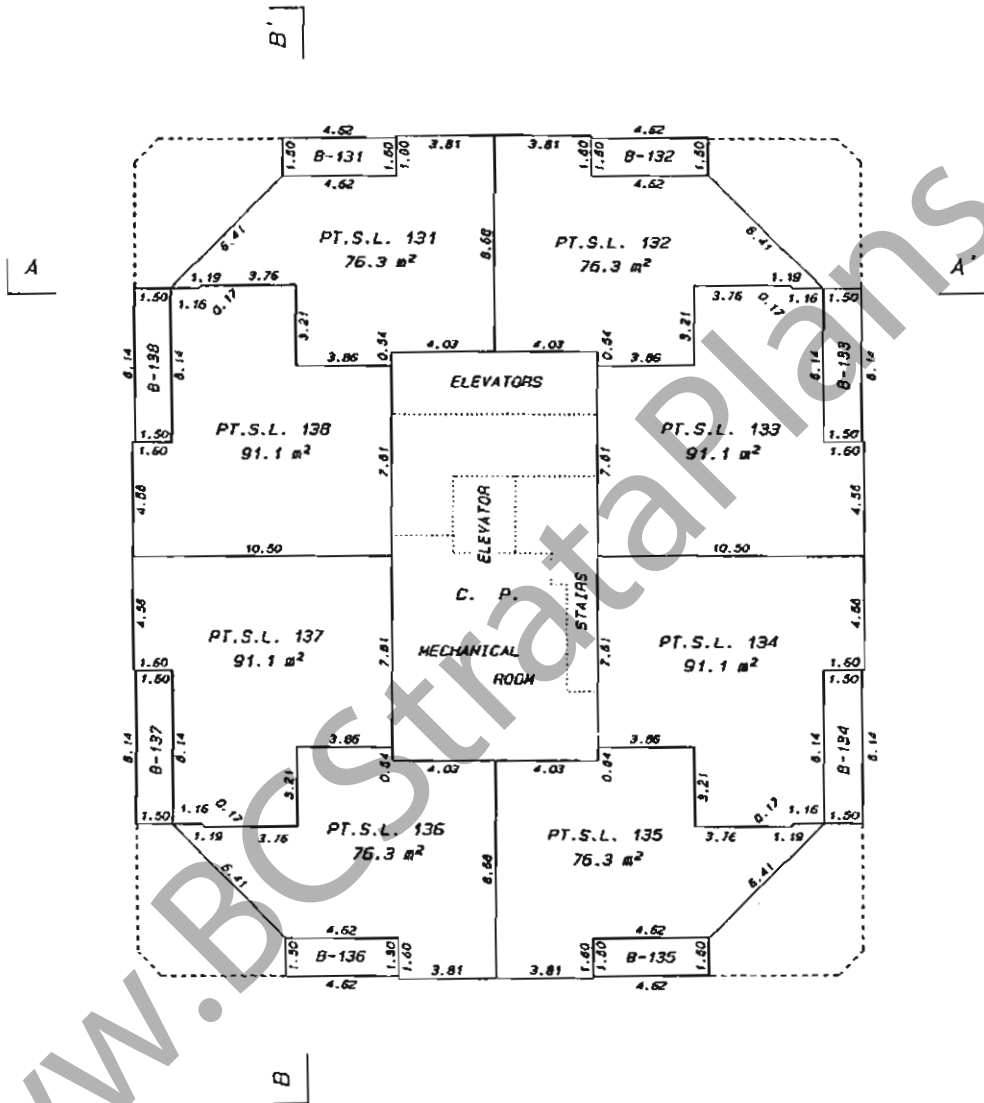
JOB NO. V - 11671

DATE April 3/96. WPN B.C.L.S.

SCALE 1:200



STRATA PLAN LMS 2580



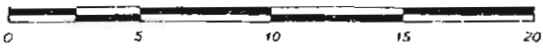
MATSON, PECK & TOPLISS
 SURVEYORS AND ENGINEERS
 210-8171 COOK ROAD
 RICHMOND, B.C. V6Y 3T8
 (ph) 270-9331
 (fax) 270-4137

JOB NO. Y - 11671

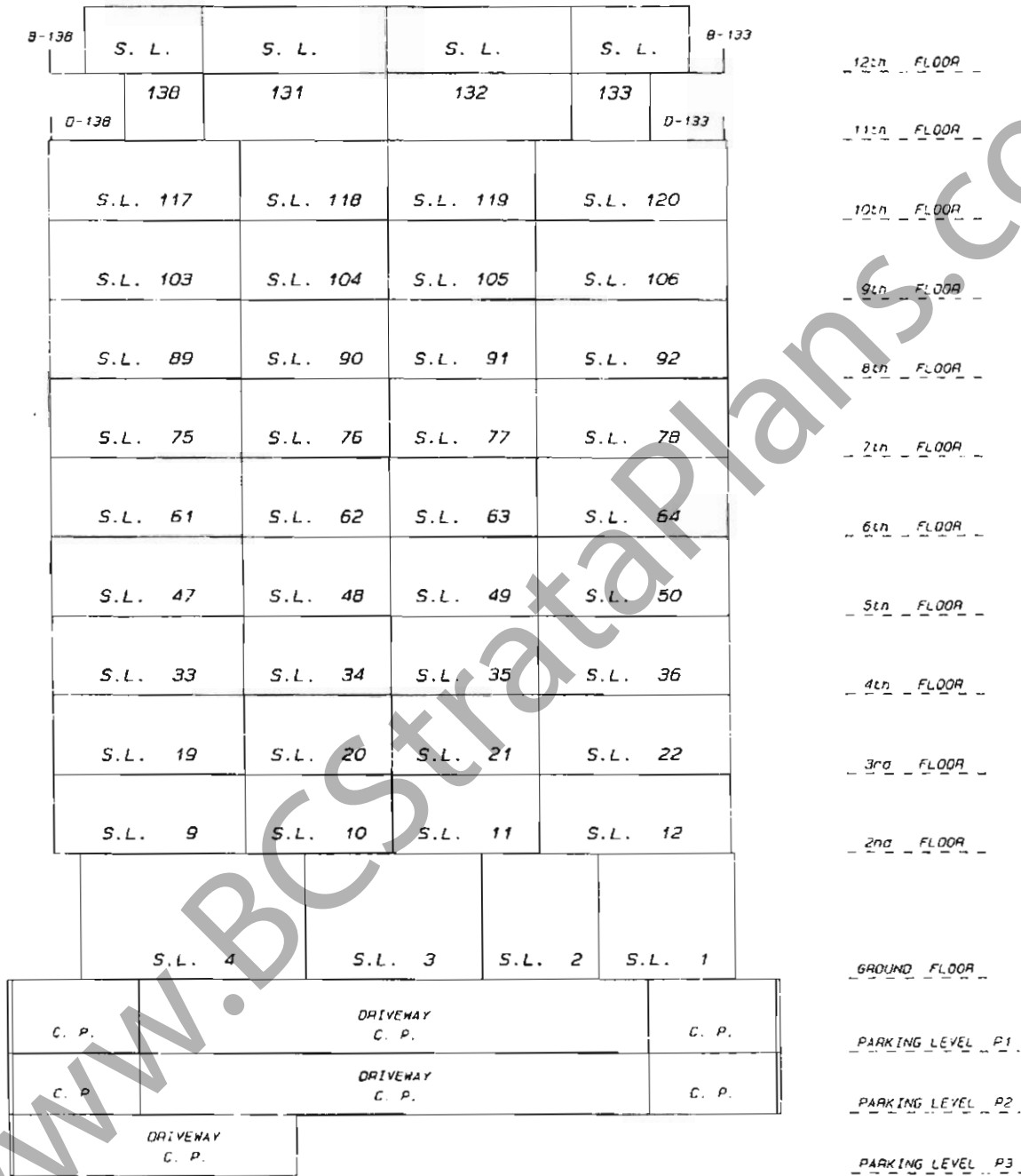
DATE April 13/96. WPH B.C.L.S.

SECTION A - A'

SCALE 1:200



STRATA PLAN LMS 2586



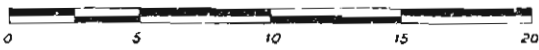
MATSON, PECK & TOPLISS
 SURVEYORS AND ENGINEERS
 210-B171 COOK ROAD
 RICHMOND, B.C. V6Y 3T8
 (dn) 270-9331
 (fax) 270-4137

JOB NO. V - 11671

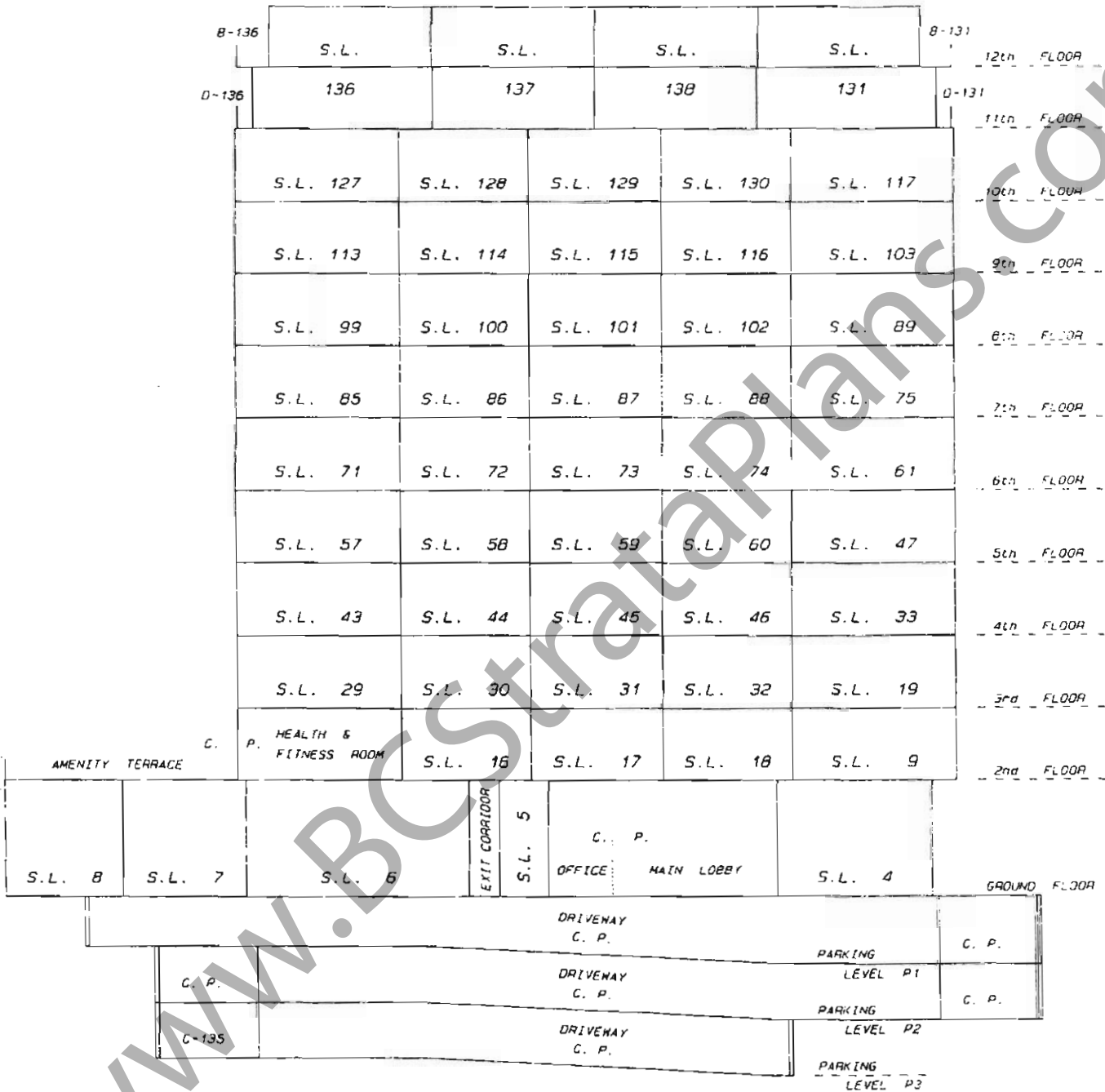
DATE April 3/96 WPH B.C.L.S.

SECTION B - B'

SCALE 1: 200



STRATA PLAN LMS 2580



MATSON, PECK & TOPLISS
 SURVEYORS AND ENGINEERS
 210-8171 COOK ROAD
 RICHMOND, B.C. V6Y 3T0
 (ph) 270-9331
 (fax) 270-4137
 JOB NO. V - 11671

DATE April 3/96 WPH B.C.L.S.