



parkside  
AT VICTORIA HILL

[LOCATION](#) [VICTORIA HILL](#) [ARCHITECTURE](#) [DEVELOPER](#) [CONTACT](#)



COMING  
EARLY  
SPRING

Homes Starting at  
\$249,900



### Victoria Hill

Accentuated by geography and royal legacy, this master planned community is located at the centre of the ... [MORE](#)



### New West Living

Rediscover historic New Westminster, the centre of the Lower Mainland located on the North side of the... [MORE](#)



### Living at Parkside

Parkside is a 22-storey high-rise emerging from Victoria Hill's North East corner...[MORE](#)



## Modern Community Immersed in Acres of Green Space

Parkside is a 22-storey high-rise emerging from Victoria Hill's North East corner. From its elevated position, stunning views of the Fraser River envelope you. Designed by the award winning IBI Group, the contemporary tower's orientation has been carefully considered to maximize views from each home. In addition to the tower, is a collection of 22 townhomes. The orientation of the townhomes encourages a pedestrian friendly streetscape which contributes to the welcoming feel of the community. [READ MORE](#)



BCCONDOS.NET



onni  
group





1 The Carlyle



2 The



Glenbrook





# parkside

AT VICTORIA HILL

[LOCATION](#) [VICTORIA HILL](#) [ARCHITECTURE](#) [DEVELOPER](#) [CONTACT](#)

## VICTORIA HILL

3 The Residences



4 Glenbrook



1 The Carlyle

2 The Grove



5 Nurses Lodge

- Once complete, Victoria Hill will include over 1,200 homes
- The unique slope of the Victoria Hill site provides a perfect natural stage for panoramic views
- Three beautifully restored heritage buildings are gracefully situated throughout the site



VICTORIA HILL  
a moment in time

A 65 acre  
community created  
through a blend of  
old and new

- Master-Planned community located at the centre of the lower mainland and in the heart of historic New Westminster
- Buildings have been carefully designed and planned to enrich the quality of life by blending restored heritages with modern new concepts
- All encompassing visions of a master plan community with an integrated plan to ensure that each phase compliments the next and every structure enhances the whole

Please visit the Victoria Hill web site here



BCCONDOS.NET



onni  
group





parkside  
AT VICTORIA HILL

[LOCATION](#) [VICTORIA HILL](#) [ARCHITECTURE](#) [DEVELOPER](#) [CONTACT](#)

*ARCHITECTURE*



## Living at Parkside

Parkside is a 22-storey high-rise emerging from Victoria Hill's North East corner. From its elevated position, stunning views of the Fraser River envelope you. Designed by the award winning IBI Group, the contemporary tower's orientation has been carefully considered to maximize views from each home. In addition to the tower, is a collection of 22 townhomes. The orientation of the townhomes encourages a pedestrian friendly streetscape which contributes to the welcoming feel of the community.

Live life well with over 5,400 sqft of amenity space including a party room and kitchen, professional fitness studio, guest suites, media room, outdoor pool and communal garden. Parkside's recreation haven offers everything you need for relaxation and enjoyment right at home.

Make your home in a rich community set amongst heritage parklands and natural green spaces. Nested in nature, Parkside is Victoria Hill's last high-rise.

Modern design  
overlooking  
stunning  
panoramas



BC CONDOS.NET



onni  
group



Register Now



parkside  
AT VICTORIA HILL

HOME CONTACT

LOCATION VICTORIA HILL ARCHITECTURE INTERIORS FLOORPLANS DEVELOPER CONTACT

INTERIORS



SUITE FINISHES



KITCHEN



BATHROOM



SECURITY

BATHROOMS

- White Oak or Walnut veneer wood cabinetry with roll out storage, with soft close mechanism & brushed stainless pulls
- Soaker tub &/or glass enclosed shower with single lever, pressure balanced control
- Granite or composite stone countertops with undermounted sink & modern chrome faucet
- Luxurious heated floors with programmable thermostat in the master bathroom
- Over height 12"x 18" tub & shower tile surround
- 12"x 24" floor tile
- Coordinated polished chrome accessories
- Polished vanity edge mirrors in all bathrooms
- Contemporary bathroom vanity lighting



BCCONDOS.NET



onni  
group





parkside  
AT VICTORIA HILL

[LOCATION](#)[VICTORIA HILL](#)[ARCHITECTURE](#)[INTERIORS](#)[FLOORPLANS](#)[DEVELOPER](#)[CONTACT](#)*INTERIORS*[SUITE FINISHES](#)[KITCHEN](#)[BATHROOM](#)[SECURITY](#)

## KITCHENS

- Wood cabinetry with White Oak or Walnut veneer outfitted with soft-close mechanism & stainless steel pulls
- Over height upper cabinets with convenient pantry-style shelving (in most homes)
- Solid granite slab or composite stone countertops, most with breakfast bar overhang
- Undermounted, extra deep double bowl stainless steel sink with in-sink waste disposal
- Contemporary single-lever American Standard faucet with pull down spray
- Full height ceramic tile backsplash
- High-end, stainless steel GE appliance package including:
  - 22cu.ft. Energy Star french door refrigerator with bottom-freezer
  - 5-level Energy Star dishwasher with hidden controls
  - 4-burner gas cooktop
  - Full size electric wall oven
  - 1.5 cu.ft. microwave with built-in hood fan
- Matte finish, 12"x 24" ceramic floor tile
- Warm track & ambient pendant lighting
- Under cabinet puck lighting





Register Now

HOME CONTACT



parkside  
AT VICTORIA HILL

LOCATION VICTORIA HILL ARCHITECTURE INTERIORS FLOORPLANS DEVELOPER CONTACT

INTERIORS



SUITE FINISHES



KITCHEN



BATHROOM



SECURITY

SECURITY & SUSTAINABILITY

- Onsite trails & greenways that run throughout
- Best sustainable practices employed whenever possible across the site
- LEED best practices were employed as applicable whenever possible across the site
- All homes are backed by a 2-5-10 year home warranty
- Well-lit underground parking with controlled access gate, for ample security
- Fire sprinkler systems in all homes and common areas



BCCONDOS.NET



onni  
group





parkside  
AT VICTORIA HILL

[LOCATION](#)[VICTORIA HILL](#)[ARCHITECTURE](#)[INTERIORS](#)[FLOORPLANS](#)[DEVELOPER](#)[CONTACT](#)*INTERIORS*[SUITE FINISHES](#)[KITCHEN](#)[BATHROOM](#)[SECURITY](#)

Inside, your Parkside home feels timeless, classic & welcoming – an ideal balance of ageless elegance & contemporary comforts.

#### INTERIORS

- Two tastefully designed colour schemes – Glenbrook or Queens
- Premium bevel-edge single plank laminate flooring in White Oak or African Ebony
- Berber-style, trackless carpeting in bedrooms
- Floor to ceiling glazed windows
- Over height ceilings:
  - 8'8" floors 1 – 22 (drops throughout)
  - 9' floors 23 – 25 (drops throughout)
- Horizontal 1" venetian blinds on all exterior windows
- Full size, Whirlpool front loading, high efficiency stacked washer & dryer
- Contemporary flat paneled swing or by-pass doors on all closets
- Convenient wire shelving in all closets
- Contemporary baseboards & coordinated door mouldings
- Multiple connections for cable, telephone & high speed internet



BCCONDOS.NET



onni  
group





# parkside

AT VICTORIA HILL

## LOCATION



Rediscover historic New Westminister, the centre of the Lower Mainland located on the North side of the Fraser River. Transportation is convenient with direct connections to downtown Vancouver, neighbouring cities, shopping malls, restaurants and recreation. A bridge-free commute with simplified transit options via the SkyTrain will get you to downtown Vancouver in 25 minutes. Stop for groceries at Royal Square Mall, shop for antiques on Columbia Street or gather fresh fruit and flowers at The Quay. This is living in the heart of convenience with everything you need close at hand.

New West,  
vibrant &  
connected





Register Now

HOME CONTACT



parkside  
AT VICTORIA HILL

LOCATION VICTORIA HILL ARCHITECTURE DEVELOPER CONTACT

CONTACT



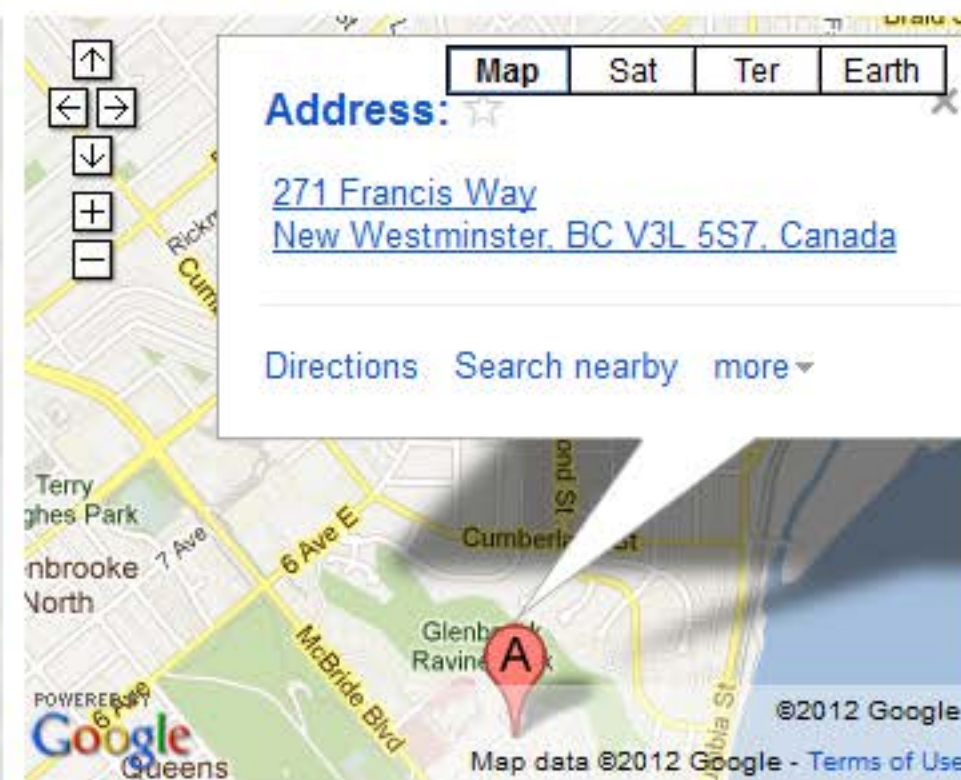
Presentation Centre Opening Soon

Register Now

For more information on Parkside please contact us at

Phone: 604.523.0733

Email: [Parkside@onni.com](mailto:Parkside@onni.com)



BC CONDOS.NET





# Parkside: New Westminster's Best Tower Value

**P**arkside, a 22-storey high-rise situated in the northeast corner of Victoria Hill, most ideal parcel in this master-planned community.

From its elevated position, Parkside delivers stunning views of the Fraser River and mountains, explained Onni vice president of sales Nick Belmar, noting its mix of 226 tower condominiums and 22 townhomes provide a wide variety for buyers.

Designed by the award winning IBI Group, this contemporary tower maximizes views from the Fraser River to Mount Baker, while the townhomes open to the trails and streetscapes of the 60-acre Victoria Hill site. "Parkside is located in a very quiet area of Victoria Hill," Belmar explained, "and is framed by green space."

It also represents a pinnacle of new home value in the Royal City with its combination of Onni quality, contemporary design and central location. Parkside residents are close to Skytrain, have a bridgeless commute to downtown Vancouver and yet a stroll from the extensive recreation and beauty of historic Queens Park. The best shopping, the new movie multi-plex theatre, the Royal Columbian Hospital and The Quay are just minutes away. "This is living in the heart of convenience," Belmar said.

Parkside homes come with the finishing and quality that has made Onni one

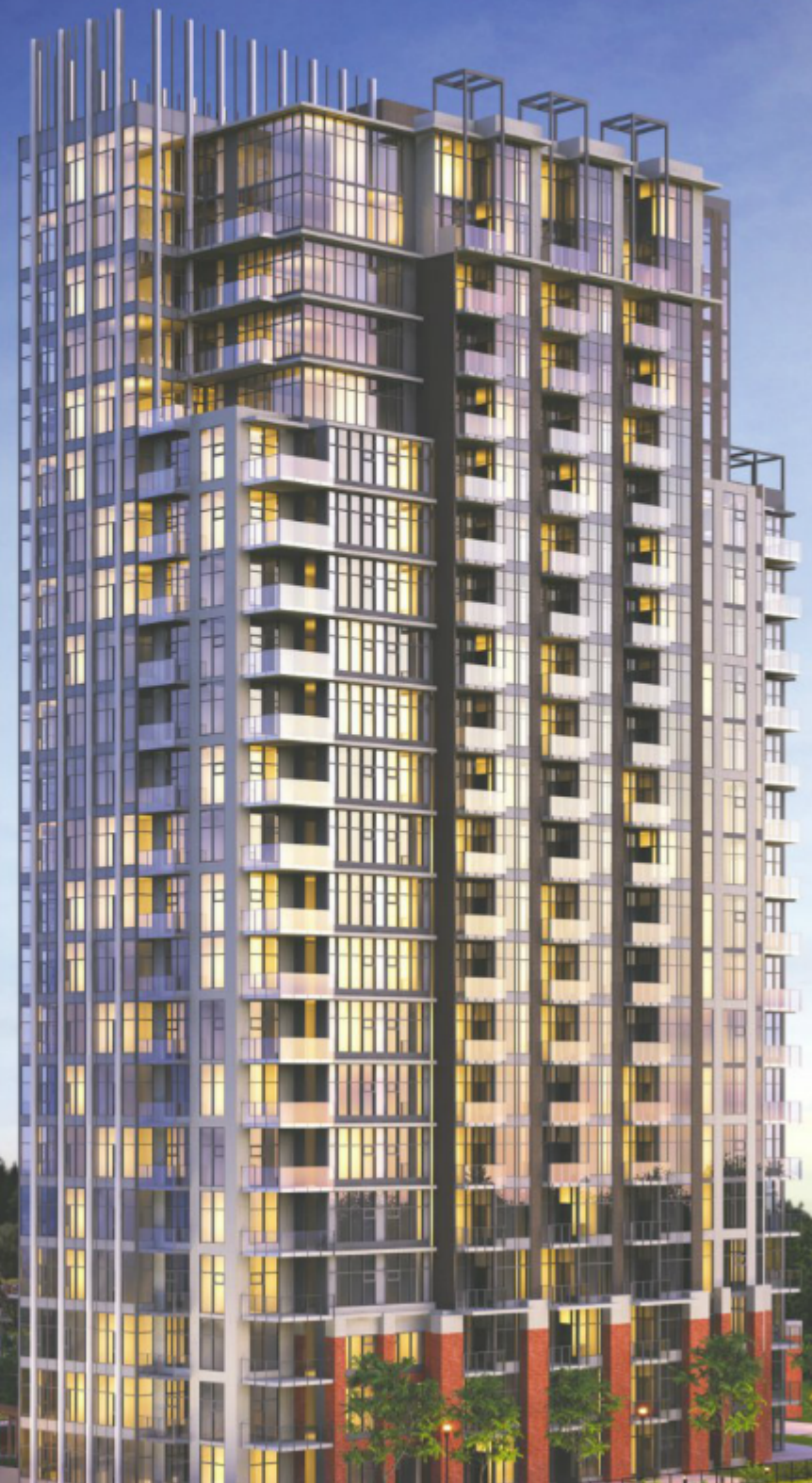
of the most successful home builders in Canada. Stone countertops in the kitchen, laminate flooring and top-of-the-line materials are all standard.

In addition to the natural spaces of Victoria Hill, residents can also enjoy the private 5,400 square foot amenity centre that includes an outdoor pool and hot tub, professional fitness studio, guest suites, media room and community garden.

Parkside represents true new home value. One bedroom apartments start at just \$249,900 (635 sq. ft.), with two-bedroom suites from \$350,900 (945 sq. ft.). The spacious townhomes, which range from 1,650 to 2,000 square feet, are priced from the low \$600,000s.

Visit Parkside's Presentation Centre and display suite this weekend, open from, 12-6 p.m. daily (except Fridays) at 295 Francis Way, New Westminster (off McBride Blvd & Royal Ave). For details, phone 604-523-0733 or visit [onni.com](http://onni.com)

**“ Last chance for  
Victoria Hill Highrise.  
Presentation Centre is open  
from, 12-6 p.m. daily (except  
Fridays) 295 Francis Way  
New Westminster (off McBride  
Blvd & Royal Ave). For details,  
phone 604-523-0733 or  
visit [onni.com](http://onni.com) ”**



BC CONDOS.NET





# Parkside 271 Francis Way New Westminster 226 homes in 22-storey tower

## Parkside's decor a mix of modern and antique

Michelle Hopkins

Province

*Sunday, May, 27, 2012*



### THE FACTS

Project: Parkside

What: 226 homes in 22-storey tower; 22 town houses

Where: New Westminster

Developer: Onni

Residence size: 1 bed 635 - 810 sq. ft; 2 bed 870 - 985 sq. ft; 2 bed + den 970 - 1,150 sq. ft;



The Parkside show suite features both contemporary and antique furniture, a mix that reflects the diversity of its buyers. The 22-storey highrise is situated on Victoria Hill's





3 bed town houses 1,650 - 2,000 sq. ft. northeast corner, as seen in the model above.  
Photograph by: Wayne Leidenfrost - PNG , The  
Prices: 1 bed from \$249,000; 2 bed from Province  
\$350,00; 2 bed + den from \$376,900, town  
houses from \$620,900  
Sales centre: 295 Francis Way and Memorial Drive, New Westminster

Hours: noon - 6 p.m., Sat - Thurs

Website: [www.onni.com/parkside](http://www.onni.com/parkside)

Tucked away just metres from one of New Westminster's busiest streets is Victoria Hill, a master-planned community with plenty of green space and walking paths.

It is in this neighbourhood where Parkside, Onni's newest development, will rise.

Over the years, Onni has built seven projects on the 65-acre site. In some ways, Onni vicepresident of sales Nick Belmar says, Parkside is a case of "saving the best for last."

For Onni interior designer, Radana Trubka, the locale served as the backdrop for her inspiration to decorate the show suite.

"The way I would dress a show suite downtown differs from the way I would dress one in Cross Town, Richmond, or New Westminster," Trubka says. "The architecture of the building, the character of the neighbourhood, and the expectations of the local residents influence the respective styling."

Since Victoria Hill has been predominantly attracting first-time homebuyers or downsizers from the immediate or surrounding neighbourhoods, it was "imperative that the decor and furnishings appeal to both groups by simultaneously illustrating the ample living space and complementing the contemporary suite finishing," she adds.

Trubka chose an eclectic palette to appeal to both the "vibrant young new homebuyers, as well as culturally diverse downsizers."

"A soft neutral colour palette was selected to give focus to the various unique industrial and antique collectibles and furniture pieces used throughout the display," she adds.

When selecting a colour palette, she suggests homeowners choose hues in the same tones, whether warm or cool, based on the mood that best complements one's furniture.

Trubka says she avoids the use of trendy pieces in show suites and selects items that have a lasting quality and appeal.





The Parkside's show suite truly reflects the diverse look that Trubka was going after by dressing the suite's contemporary finishes with top quality traditional and unique antique furniture pieces.

© Copyright (c) The Province





**From \$249,900! Parkside at Victoria Hill New Westminster Condo Tower & Town Homes by Onni > Spectacular Views & Pricing at the New West Parkside Condos & Townhouses Now Launching!**





## **Parkside at Victoria Hill New Westminster Condo Tower**

HIGH-RISE LIVING IN NEW WESTMINSTER' S MOST CELEBRATED MASTER-PLANNED COMMUNITY > Introducing the New Westminster Parkside condo tower at Victoria Hill neighbourhood by Onni Developers! Coming early Spring 2012, the Parkside Victoria Hill New Westminster condos and town homes will be this neighbourhood' s latest outstanding high-rise. With the presentation centre geared for an early Spring launch, you can now register for this great opportunity to purchase a new Parkside Victoria Hill New Westminster condo for sale! Here are some incredible features of the Victoria Hill New Westminster Parkside condo tower: the sixty five acre community (master planned by Onni Developers) will boast over forty acres of public green space and a pedestrian over pass that connects you directly to Queens Park and all of its great amenities and conveniences. The preconstruction New Westminster Parkside Victoria Hill condo tower will be designed by award winning IBI Group. The location of the new Parkside New Westminster condo tower and town homes in the master planned Victoria Hill neighbourhood is unparalleled, as it is situated in an elevated site, and thereby offering stunning views of the Fraser River as well as the North Shore mountains and beyond. The Onni Parkside New Westminster condo tower will be 22 storeys in height and will also offer a boutique collection of ground level town homes. Visit <http://www.onni.com/parkside/> for all the updated information about this incredible project. We' ve included new renderings, images, maps and the site plan of the Parkside at Victoria Hill New West condo tower and town houses. The New West Parkside Condos and Town houses are now being marketed as a: Modern Community Immersed in Acres of Green Space. This is very exciting for prospective homebuyers who will be greeted with an amazingly designed Victoria Hill Parkside New West condo tower of 22 storeys in height. Located in the north east corner of the master planned, award winning Victoria Hill New West real estate community, this IBI Group Architect designed glass and steel tower is being offered by the Onni Group, a master builder of multi-family housing in the high-end yet affordable market. In addition to the 22 storey high-rise, the New West Parkside Town Homes will also be released. There are only 22 opportunities for the Parkside New Westminster Town Homes community, which feature ground level entryway, low-rise multi-level living that is perfect for couples and families.





**Robert Burnaby Park**  
Cariboo Hill School Park  
Cariboo Park  
Home Park  
Sapperton Park  
COQUITLAM  
Sapperton Station  
FRASER RIVER  
COLUMBIA ST  
BRUNETTE AVE  
CUMBERLAND ST  
McBride Park  
BLACKBERRY DR  
ACACIE BLVD  
MEMORIAL DR  
ROSS DR  
QUEEN'S PARK  
11  
ROYAL AVE  
PATRICK BIRDIE  
Columbia Station  
Gateway Station  
4TH AVE  
6TH AVE  
6TH ST  
7TH ST  
127H ST  
STEWARTSON WAY  
SkyTrain  
New Westminster Station  
Columbia Station  
1  
2  
3  
4  
5  
6  
7  
8  
9  
10  
11  
12  
13  
14  
15  
16  
17  
18  
19  
20  
21  
22  
23  
24  
25  
26  
27  
28  
29  
30  
31  
32

**DOWNTOWN VANCOUVER**  
25 MINUTE DRIVE

**GROcery**

- 1 RIVERMARKET AT WESTMINSTER QUAY
- 2 SAVE ON FOODS
- 3 SAFEWAY
- 4 THRIFTY FOODS

**SHOPPING**

- 5 ROYAL CITY CENTRE
- 6 ROYAL SQUARE MALL  
Safeway, Starbucks, M&M Meat Shop, BCL liquor Store, Subway Restaurant
- 7 COLUMBIA SQUARE
- 8 CREST PLAZA

**DINING**

- 9 THE BOATHOUSE
- 10 THE KEG
- 11 VICTORIA SUSHI
- 12 THE OLD BAVARIAN HAUS
- 13 HERITAGE GRILL

**SCHOOLS**

- 14 NEW WESTMINSTER SECONDARY
- 15 HERBERT SPENCER COMMUNITY SCHOOL
- 16 ÉCOLE GLENBROOK MIDDLE SCHOOL
- 17 DOUGLAS COLLEGE

**CULTURE**

- 18 PUBLIC LIBRARY
- 19 MASSEY THEATRE
- 20 ROYAL CITY MUSICAL & THEATRE SOCIETY

**MEDICAL & CIVIC SERVICES**

- 21 ROYAL COLUMBIAN HOSPITAL
- 22 NEW WEST WELLNESS CENTRE
- 23 GLENBROOK PET CARE HOSPITAL
- 24 CITY HALL
- 25 10TH STREET MEDICENTRE

**RECREATION**

- 26 MERCER STADIUM
- 27 SPORTS FIELDS
- 28 CANADA GAMES POOL & FITNESS CENTRE
- 29 ROYAL CITY CURLING CLUB & LA CROSSE HALL OF FAME
- 30 MILLENIUM TRAIL
- 31 SUMMER SOFTBALL DIAMOND
- 32 RIVERBOAT CASINO

■ SKYTRAIN ●●●●●●●●●●

**parkside**  
AT VICTORIA HILL



## **New Information About the New Westminster Parkside Condos & Townhomes at Victoria Hill Community**

Marketed at New Westminister real estate's best condo high-rise tower value, the new Parkside at Victoria Hill New West condo residences and townhouses are putting their final touches on the new presentation centre and VIP Launch coming late March 2012! The starting price point is set, and prospective new homebuyers looking for true condominium value in a master planned new community will certainly enjoy this: The New Westminister Parkside Condos & Townhomes will start from just \$249,900! There will be a fine collection of floor plans and multi-family townhouse plans to choose from in this Victoria Hill New Westminister real estate community which encompasses 40 acres of public green spaces and a direct connection to Queen's Park via the McBride Pedestrian Overpass. True New West condo value also starts from just \$249,900. Set within the award winning Victoria Hill community with homes starting in the mid \$200's, Parkside New Westminister condo tower residences is the best high-rise value in this part of the city. In addition to the affordability, the Victoria Hill Parkside New West condos will also showcase over 5500 square feet of amenity spaces for resident use. These private amenities at the Victoria Hill Parkside New Westminister condo community will enjoy beautifully finished and furnished lounge clubhouse relaxation area, a theatre room, fitness studio designed by professionals as well as an outdoor pool! This is the first project in the Victoria Hill New Westminister real estate district to have such great amenity spaces just for its residents. Not only that, but the affordability comes with added bonuses that include spectacular views. The Victoria Hill Parkside New Westminister condos feature stunning views from the Fraser River to Mount Baker. Of course, the higher you are in the high-rise residences at the Parkside New West condo tower, the better the panoramas. The preconstruction New West Parkside at Victoria Hill condos are coming this Spring 2012 and are presented by Onni Developers. VIP launch is coming soon so stay tuned and register your interest today!







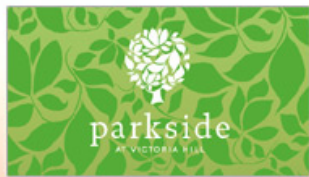
## Why Choose New West's Victoria Hill Neighbourhood?

Affordability and location are the key selling features for the new Parkside New West condo tower and townhouse residences. Affordable New West condos start from the mid \$200's, which makes it one of the best valued properties in the New Westminster real estate district based on price per square foot. These new Parkside New West condos are affordable but also well finished with high-end features, gourmet chef inspired kitchens and opulent bathrooms. The open concept floor plans are also very spacious, giving way to large outdoor living with most suites providing views of the water and/or city. Affordable New West Parkside condos at Victoria Hill are amazingly designed in every way by Onni Developers. In addition, location, location, location is the key to the success of the award winning New West Victoria Hill neighbourhood. Here, residents at the Parkside at Victoria Hill New West condos and townhomes will be close to all sorts of recreational options that includes the Riverboat Casino, Summer Softball Diamond, the Millennium Trail, Royal City Curling Club and Lacrosse Hall of Fame in addition to the Canada Games Pool & Fitness Centre, Sports Fields and Mercer Stadium. Also within New West's Victoria Hill neighbourhood and within walking distance are medical and medical and civic services that include 10th Street MediCentre, City Hall, Glenbrook Pet Care Hospital, New West Wellness Centre and Royal Columbian Hospital. Cultural things around the Parkside at Victoria Hill New Westminster real estate development by Onni Developers are close to Massey Theatre, Royal City Musical Theatre Society as well as the New West Public Library. Schools within a few minutes distance include Douglas College, Ecole Glenbrook Middle School, Herbert Spencer Community School and New West Secondary School. The dining options near the Victoria Hill New West Parkside condo community includes The Boathouse, Heritage Grill, The Old Bavarian Haus, Victoria Sushi and The Keg just to name a few. Shopping





at Royal City Centre, Royal Square Mall, Columbia Square and Crest Plaza in addition to a multitude of big box retailers are also within a few minutes of New West's Victoria Hill Parkside Condos and Townhouses. Grocery stores such as the River Market at New Westminster Quay, Thrifty Foods, Safeway and Save on Foods are seconds away. Also, there are numerous public parks and green spaces nearby and downtown Vancouver is only a 25 minute drive away. Other transit routes from the Victoria Hill Parkside New West condos and townhomes include the SkyTrain Line at Columbia Station and Sapperton Station. Also, it's a bridgeless commute to Vancouver and walkable to the beautiful Quay area.



Again, the preconstruction New Westminster Parkside Townhomes and Condos are located in the northeast corner of Victoria Hill neighbourhood which will eventually be home to 1200 homes over 65 acres of space complete with master planned green spaces. Also, the unique slope of the Victoria Hill New West real estate location site provides a perfect natural stage for panoramic views. There are also 3 beautifully restored heritage buildings within the community, located in historic New Westminster BC. All of the building phases have been carefully designed and planned to fit seamlessly within this village setting, including the new Parkside at Victoria Hill New West real estate community. Each compliments each other.









# KITSWEST

INTELLIGENT LIVING IN THE HEART OF KITS

## PRIVELEGED PREVIEW OF WESTSIDE'S HOTTEST OFFERING

**PRIORITY IS KEY TO OUR SUCCESS.  
PREVIEW, SELECT, AND BUY AT PRIORITY PRICES.**

As a Magnum Projects' esteemed **VVIP Realtor**, you are privileged to preview this exceptional and rare condo offering in the heart of Kitsilano, well before our doors open to the public.

**WHEN: Thursday, February 16, 2012**  
**WHERE: 2918 West 4th Avenue**  
**TIME: 530-630pm**

Enjoy wine and canape's catered by **Quattro's**.  
Pick up your **priority info packages**.  
Find out about your **priority buying date**.

**PRICES START FROM \$299,900!**  
**(Yes! Parking and Storage Included)**

*\*\* Limited to one purchase per buyer only, due to exceedingly high volume of registration \*\**

RSVP at **604.568.6048** or [info@kitswest.com](mailto:info@kitswest.com) by February 13th, 3pm

**KITSWEST SALES TEAM**  
**SALES CENTRE - 2918 West 4th AVENUE, VANCOUVER, BC**

P.S. - Want more information? Check out our **latest ad**, [here!](#)

### FIND OUT MORE

**E** [info@kitswest.com](mailto:info@kitswest.com)  
**W** [kitswest.com](http://kitswest.com)  
**T** 604.568.6048

DEVELOPED BY



MARKETING BY

**magnum**  
projects

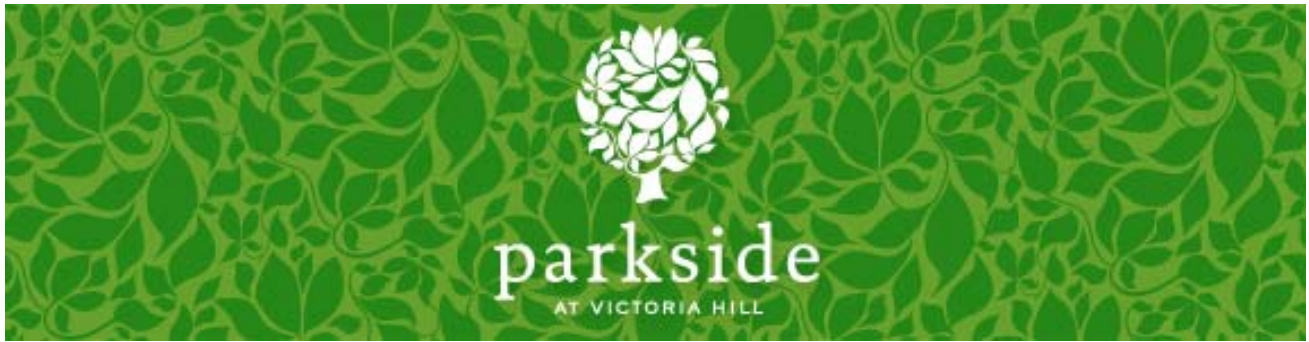
This is not an offering for sale, and such offering can only be made by a Disclosure Statement. E.& O.E.



BC CONDOS . NET







## HIGH-RISE LIVING IN NEW WESTMINSTER'S MOST CELEBRATED MASTER-PLANNED COMMUNITY



### COMING EARLY THIS SPRING

Parkside is Victoria Hill's last high-rise. We're gearing up to open our Presentation Centre this Spring! Register below to be kept up to date on this exciting opportunity.

- The 65 acre Victoria Hill community boasts over 40 acres of public green space, and a pedestrian overpass that connects directly to Queens Park and its amenities
- The award winning IBI Group designed this contemporary 22-storey tower and collection of townhomes
- From Parkside's elevated position, stunning views of the river and mountains envelope you.

We look forward to working with you,  
Parkside Sales Team  
[parkside@onni.com](mailto:parkside@onni.com)  
[ONNI.COM](http://ONNI.COM)

**REGISTER  
HERE  
TODAY**

