



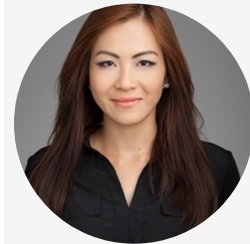
PROPERTY DETAILS

Beds	1 Beds
Baths	1 Baths
Sleeps	Sleeps
Area	600 sqft
Property Type	Strata unit/property
Parking	Yes
Storage	Yes, storage locker
Pet Policy	No pets

INCLUDED UTILITIES

Parking:
Storage:
Hot water

CONTACT AGENT



Bryna Ong
Agent
Email: bryna@bolld.ca
Ph: [1-7787986494](tel:1-778-798-6494)

Rented

Luxury Living 1Bed/1Bath w/Balcony For Rent in METROTOWN Burnaby

4508 Hazel St Burnaby BC V5H 0E4

\$1975/Month

Strata unit/property details

Address	4508 Hazel St
City	Burnaby
State / Province / Region	BC
ZIP / Postal Code	V5H 0E4
Country	CA

PROPERTY DESCRIPTION

PROPERTY ADDRESS: SOVEREIGN 2508 - 4508 Hazel St Burnaby BC V5H 0E4

PROPERTY FEATURES:

- Unfurnished
- 1 Bedroom
- 1 Bathroom
- Balcony
- In-suite laundry
- 1 Parking stall
- 1 Storage locker
- 600 SqFt

AMENITIES:

- Concierge service (open 9am - 5pm)
- 24 hr security
- Fully equipped fitness facility
- Indoor pool
- Sauna
- Large party room

NO PETS/NO SMOKING

AVAILABILITY: Available now!

DESCRIPTION:

Welcome to SOVEREIGN! A luxurious building made by BOSA. Bright and spacious 600 sq.ft. suite in a sought-after building in the lively Metrotown area. Offers a highly functional floor plan with beautiful laminated hardwood floor, air conditioning, gourmet kitchen with Miele appliances and granite countertops, and bathroom vanity. The open concept kitchen extends to the living room making it perfect for entertaining. The interior offers unparalleled luxury finishes throughout. Sovereign building offers high-end facilities with majestic entrance and amazing elegant finishes.

HIGH PROFILE LOCATION! Located in the corner of Kingsway and Willingdon in Burnaby's Metrotown neighbourhood. Few steps away from The Crystal Mall, shopping centres, supermarkets and great restaurants. Close to Skytrain Rapid Transit which can take you to downtown Vancouver in under 15 minutes.

NEARBY SCHOOLS:

- Burnaby Montessori School
- Bright Star Montessori School
- Marlborough Elementary School

TERMS:

- 12 month lease
- 1/2 months rent deposit
- Tenant's insurance is a must
- Move in fee as per Strata
- Credit check required

PROFESSIONALLY MANAGED BY:

Bolld Real Estate Management
B - 2127 Granville Street
Vancouver BC V6H 3E9

Property photos

