



**PROPERTY DETAILS**

Beds	1 Beds
Baths	1 Baths
Sleeps	Sleeps
Area	870 sqft
Property Type	Strata unit/property
Parking	Yes
Storage	In property storage
Pet Policy	

Rented

**Luxury Living NE Corner 1 Bedroom+Solarium in Downtown Vancouver (938 Smithe St Vancouver)**

**938 Smithe St Vancouver BC V6Z 3H8**

**\$2700/Month**

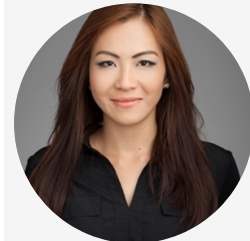
**Strata unit/property details**

Country	CA
---------	----

**INCLUDED UTILITIES**

Parking:

**CONTACT AGENT**



**Bryna Ong**

Agent

Email: [bryna@bolld.ca](mailto:bryna@bolld.ca)

Ph: [1-7787986494](tel:1-778-798-6494)





## PROPERTY DESCRIPTION

**PROPERTY ADDRESS: ELECTRIC AVE 15th floor 938 Smithe St Vancouver BC V6Z 3H8**

### PROPERTY FEATURES:

- 1 Bedroom with walk-in closet
- Large solarium (14x8) that can serve as a flex space/ 2nd bedroom
- 1 Full bathroom
- 1 Secured underground parking
- 870 SqFt
- Unfurnished
  
- In-suite laundry
- Dishwasher
- Microwave
- Fridge
- Stove
- Window coverings

### AMENITIES:

- Fully Serviced by 5 Elevators
- Fully equipped exercise centre
- Playground
- 2 Rooftop Gardens
- 2 Meeting/conference rooms
- Private Dolby surround movie theatre
- Lounge with fireplace and common kitchen

### NO PETS/NO SMOKING

**AVAILABILITY:** March 1, 2020

### DESCRIPTION:

City living at its best! Beautiful, bright and spacious (870 s.f.), N.E. corner suite in a sought-after building on Hornby & Smithe with a commanding view of the city and peek-a-boo views of water and mountains. This executive suite overlooks the Courthouse, Robson Square, Art Gallery & beyond. Features one Master bedroom + a large solarium (could be 2nd bedroom or office) + den, open kitchen with upgraded granite countertops, hardwood floor, in-suite storage and laundry. 'Electric Avenue' has excellent amenities which include meeting rooms, club house, exercise center, theatre room & rooftop gardens. Has to be seen to be appreciated. One parking stall included.

**GREAT LOCATION!** Situated in the heart of Vancouver's famous shopping area. Business centres, banks, restaurants, shopping centres and cafes are just steps away. Minutes walk to Skytrain and bus stations.

### NEARBY SCHOOLS:

- King George Secondary School
- Crosstown Elementary School
- Anchor Point Montessori School
- Pattison School
- Alexander Academy

### TERMS:

- 12 month lease
- 1/2 months rent deposit



Property photos

