



PROPERTY DETAILS

Beds	1 Beds
Baths	1 Baths
Sleeps	2 Sleeps
Area	558 sqft
Property Type	Strata unit/property
Parking	Yes
Storage	Yes, storage locker
Pet Policy	No pets

For Rent

\$500 off for September 15 move in!
1708-3809 Evergreen Pl, Burnaby, BC V3J 1N4, Canada

3809 Evergreen Place

\$2400/Month

Strata unit/property details

Country	CA
---------	----

INCLUDED UTILITIES

Parking:	
Storage:	

CONTACT AGENT



**Bolld Real Estate
Management**

Agent

Email: info@bolld.ca

Ph: [6043362489](tel:6043362489)

PROPERTY DESCRIPTION

PROPERTY ADDRESS: 1708 - 3809 Evergreen Place, Burnaby, BC

\$500 off for September 15 move in !

TO BOOK A SHOWING:

1. Go to <https://forrent.bolldpm.com/>
2. Find the property from the list
3. Click the 'Schedule a Showing' button
4. Choose from the posted date and select your preferred showing type
5. Click 'Request' to submit completely
6. Please call us at (604) 336-2489 or info@bolld.ca if you are unable to book a showing.

PROPERTY FEATURES:

- Unfurnished
- 1 Bedroom
- 1 Bathroom
- In suite laundry
- Parking included (Dedicated Electronic Vehicle)
- Storage included
- Central AC
- Central Heating
- 558 sqft + 141 sqft (Balcony)

PROPERTY DESCRIPTION:

Brand new at THE CITY OF LOUGHEED in Tower. Amazing location and views from this 17th level home featuring air conditioning, over-height ceilings, Bosch appliances, island and quartz counters, side by side washer & dryer, big balcony, floor to ceiling windows, with 24 hr concierge. Parking, storage locker & visitor parking. Over 22,000 sqft of private amenities to enjoy; fitness centre, cardio rm, table tennis, yoga studio, privacy pods, putting green..so much more on 3 levels! Shopping!!, dining, with every possible amenity at your doorstep! Skytrain station, Vancouver Golf Club just minutes away easy access to SFU.

NO PETS/NO SMOKING

AVAILABILITY: Septmber 1, 2024

Schools Nearby

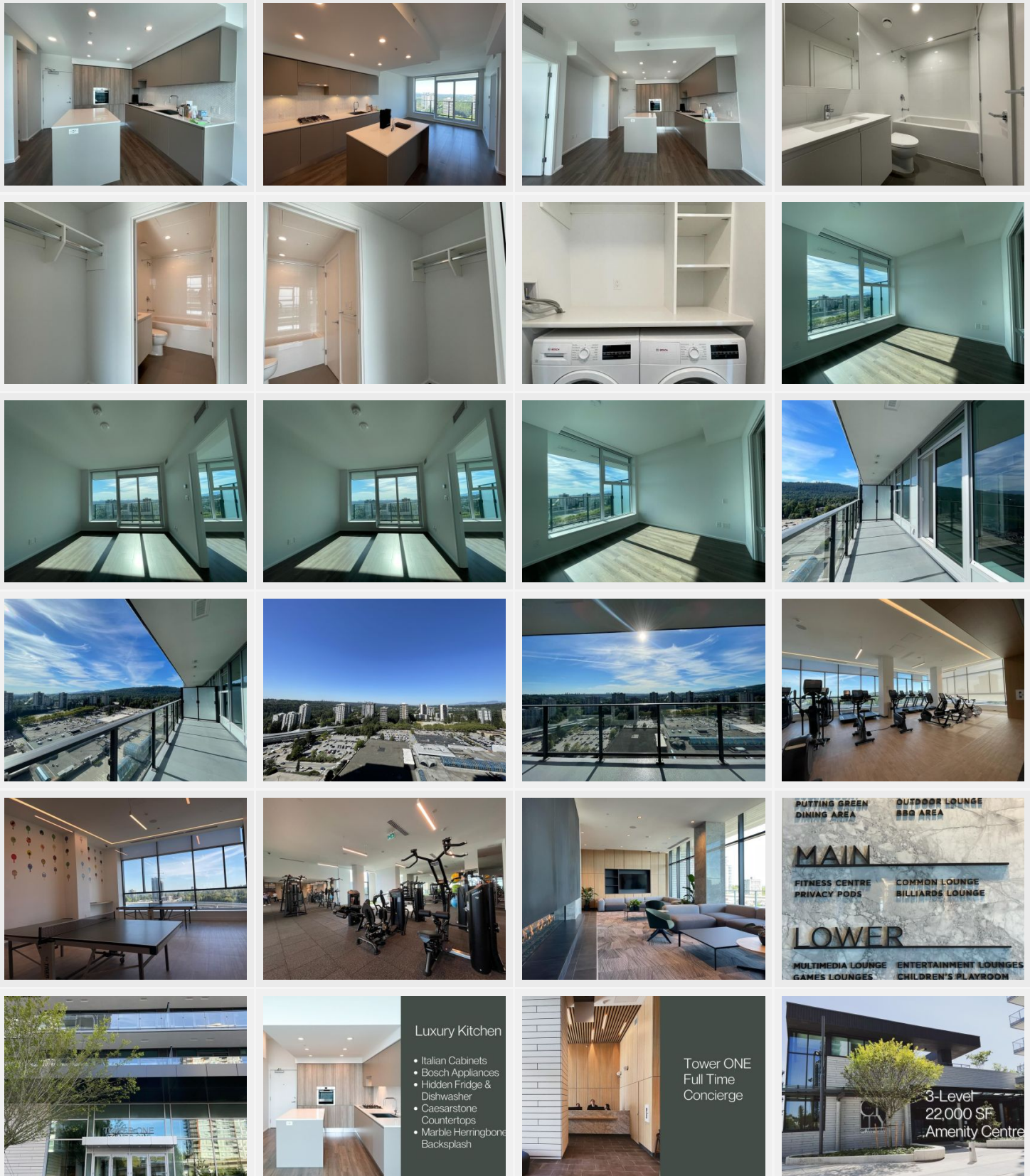
Cameron Elementary

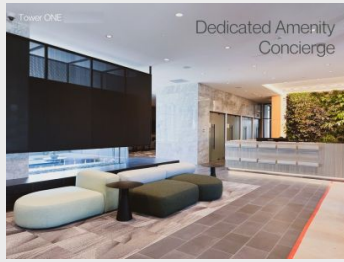
Lyndhurst Elementary

Stoney Creek Community School

Yorkville University

Property photos





Dedicated Amenity Concierge



Table Tennis

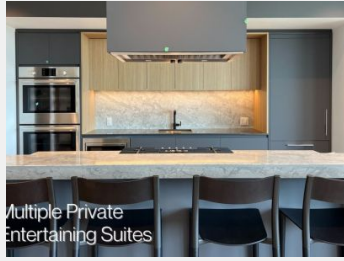


THE CITY OF LUXURIOUS

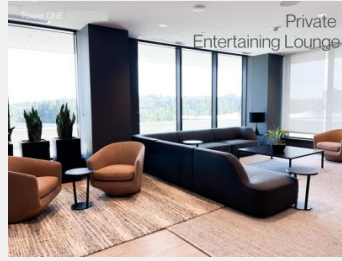
- ENTERTAINMENT LOUNGES
- MULTIMEDIA LOUNGE
- DRIVING LOUNGE
- GAME LOUNGES



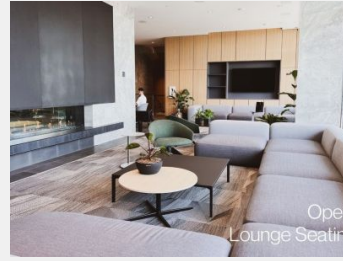
Open Lounge Seating



Multiple Private Entertaining Suites



Private Entertaining Lounge



Open Lounge Seating

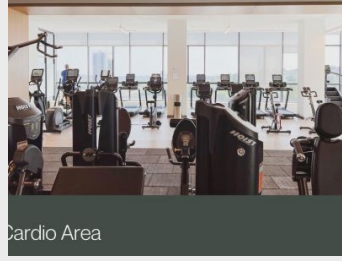


Amenity Rooftop

- BBQ
- Harvest Table
- Firepit
- Putting Green
- Play Area



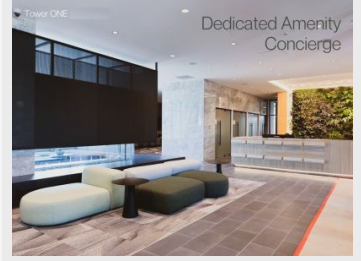
Billiards and Foosball



Cardio Area



10,000 SF Fitness Facility



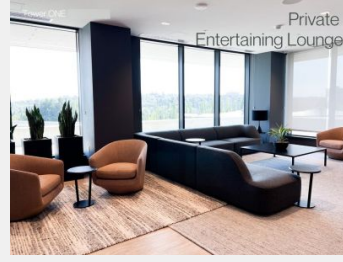
Dedicated Amenity Concierge



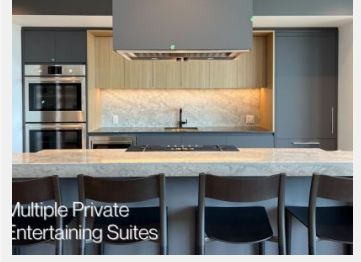
Close Proximity to SFU



Children's Play Area



Private Entertaining Lounge



Multiple Private Entertaining Suites



3-Level 22,000 SF Amenity Centre

