



**PROPERTY DETAILS**

Beds	2 Beds
Baths	2 Baths
Sleeps	Sleeps
Area	905 sqft
Property Type	Strata unit/property
Parking	Yes
Storage	
Pet Policy	No pets

Rented

1822 One Pacific

68 Smithe St Vancouver BC V6B 0P4

\$3000/Month

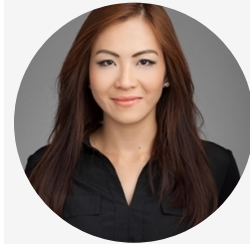
**INCLUDED UTILITIES**

Hot water
-----------

**Strata unit/property details**

Suite#	1822
Address	68 Smithe St
City	Vancouver
State / Province / Region	BC
ZIP / Postal Code	V6B 0P4
Country	CA

**CONTACT AGENT**



**Bryna Ong**  
Agent

Email: [bryna@bolld.ca](mailto:bryna@bolld.ca)

Ph: [1-7787986494](tel:1-778-7986494)





## PROPERTY DESCRIPTION

**PROPERTY ADDRESS: ONE PACIFIC 1822 – 68 Smithe Street, Vancouver, BC V6B 0P4**

5-STAR EXPERIENCE!! 18th floor with 2 bedrooms + Den + patio and solarium. One Pacific has the Riviera Deck which features a cantilevered glass swimming pool, the Sky Garden and several on-site retail services. Great amenities that Yaletown Downtown Vancouver has to offer — the seawall, Yaletown, Marina, and the exciting sports & entertainment district. One Pacific offers residents 5-star living experience.

### PROPERTY FEATURES:

- 2 Bedrooms + Den
- 2 Bathrooms
- In-Suite Laundry
- 2 Parking Stalls
- 905 SF

### FEATURES:

- Excellent amenities with all stainless steel kitchen appliances brand new (gas stovetop, stacked in-suite laundry W/D, with spacious linen closet, etc.).
- Laminate hardwood flooring throughout living space; carpet in the bedroom. A marble backsplash and beautiful porcelain tile.
- All rooms are pre-wired for internet and TV.

### INTERIOR FEATURES:

- Air conditioning
- Overheight 8'6" ceilings in most suite areas.
- Open balcony
- Porcelain tile flooring in the laundry closet
- Interior suite and closet doors are trimmed
- Main closets with built-in organizer shelf and rod
- Roller-shade window coverings
- Television and telephone jacks in every principal room

### BATHROOM:

- Laminate cabinet vanity with soft-close drawer
- Engineered quartz stone countertop
- Kohler under-mount sink with polished chrome faucet
- Custom medicine cabinet with mirror, shelves, and built-in lighting
- White marble tile flooring and tub/shower surround
- Polished chrome Grohe faucet, tub spout and showerhead
- Dual flush toilet with soft close seat
- Recessed pot lighting

### AMENITIES:

- Overhanging heated glass cantilever swimming pool
- Outdoor Jetted Hot Tub
- Sauna and Steam Room
- Riviera Deck with lounge seating and fire pits
- Full Entertainer's Kitchen and Tasting Bar
- Billiards and Games Room
- Rooftop Sky Garden with Children's Play Area





Property photos

