



**PROPERTY DETAILS**

Beds	2 Beds
Baths	2 Baths
Sleeps	Sleeps
Area	912 sqft
Property Type	Strata unit/property
Parking	Yes
Storage	
Pet Policy	

For Rent

**#1802 Sterling – 1050 Smithe Street Vancouver**

**1050 Smithe Street**

**\$2900/Month**

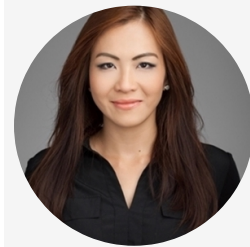
**Strata unit/property details**

Suite#	1802
Address	1050 Smithe Street
City	Vancouver
State / Province / Region	BC
ZIP / Postal Code	V6E 4T4
Country	CA

**INCLUDED UTILITIES**

Parking:

**CONTACT AGENT**



**Bryna Ong**  
Agent

**Email: [bryna@bolld.ca](mailto:bryna@bolld.ca)**

**Ph: [1-7787986494](tel:1-778-7986494)**





## PROPERTY DESCRIPTION

### STERLING 1802 – 1050 Smithe Street Vancouver BC V6E 4T4

Bright and spacious 2 bedroom suite by YMCA, offers vibrant city views, 850 SqFt of living space and overheight ceilings. Few steps from shopping centres, cafes, restaurants, theatres and art galleries. GREAT AMENITIES!!

LOCATION! Located in the shopping district of Vancouver and few blocks away from Robson St, Pacific Centre, and Royal Centre. Walking distance to Sky-train station.

### PROPERTY FEATURES:

- 2 Bedrooms + Den
- 2 Bathrooms
- Balcony
- In-suite laundry
- Secured underground parking
- Walk-in closet built into in-suite storage room
- Secured underground parking
- 912 SqFt

### AMENITIES:

- Concierge
- Elevators
- Fully equipped exercise centre
- Billiard room
- Mailroom
- Swirlpool/hot-tub
- Steam room
- Lounge with kitchen

### NEARBY SCHOOLS:

- Lord Roberts Annex
- Lord Roberts Elementary School
- King George Secondary School
- Pattison School

**AVAILABILITY: APRIL 1ST 2021**

### NO PETS/NO SMOKING

\*\*\*Please arrive early to the showing as it is a group showing and we go into the property at the exact time it was scheduled for. If you are late the leasing agent will not be able to show you the property. If you are running late, or cannot make the showing please call 8552668588 to speak with a representative.\*\*\*



Property photos

