



PROPERTY DETAILS

Beds	2 Beds
Baths	2 Baths
Sleeps	Sleeps
Area	840 sqft
Property Type	Strata unit/property
Parking	Yes
Storage	Yes, storage locker
Pet Policy	No pets

INCLUDED UTILITIES

Parking: x <u>1</u> (Stall # <u>P #5</u>)
Storage: <u>P #5</u>
Hot water

For Rent

#3704 488 SW Marine Drive, Vancouver BC V6E 2Y3

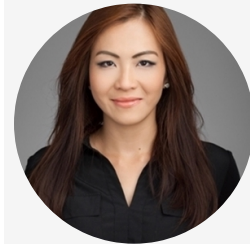
#3704 488 SW Marine Drive, Vancouver BC V6E 2Y3

\$2900/Month

Strata unit/property details

Suite#	3704
Address	488 SW Marine Drive
City	Vancouver
State / Province / Region	BC
ZIP / Postal Code	V6E 2Y3
Country	CA
Strata management company	Warrington PCI
Location of parking	P5
Location of the storage	P5

CONTACT AGENT



Bryna Ong

Agent

Email: bryna@bolld.ca

Ph: [1-7787986494](tel:1-7787986494)

PROPERTY DESCRIPTION

PROPERTY ADDRESS: 488 SW Marine Drive, Vancouver BC V6E 2Y3

PROPERTY FEATURES:

- 2 Bedroom
- 2 Bathroom
- Hot Water
- Parking
- Storage
- Unfurnished

AVAILABILITY: JANUARY 1ST 2021

AMENITIES:

- Breathtaking ocean, river and mountain views
- Urban dining lounge and social rooms, featuring a deluxe kitchen, large dining table, TV lounge, and other recreational areas
- Outdoor rooftop terrace to take in the sun, with BBQ's and children's play area
- Live-in Caretaker
- Secure underground parking
- Bike storage
- Bike Mobility Centre (Bike Hub) for servicing and repairs

NEIGHBOURHOOD:

- Ultra-convenient to the Canada Line at Marine Drive Station and the South Vancouver Bus Exchange
- Shops, services, banks, coffee shops and restaurants on the High Street Plaza level
- Cineplex Entertainment Movie Theatres
- Major Grocery Store
- Major Drug Store
- 5 minutes to downtown Richmond
- 9 minutes to Vancouver International Airport
- 13 minutes to Vancouver's Yaletown
- 15 minutes to Vancouver's Downtown city centre
- Minutes to 6 golf courses and clubs: Langara, Point Grey, Shaughnessy, McCleery, Eaglequest and Fraserview

DESCRIPTION:

Marine Gateway - 488 SW Marine Drive, Vancouver V6E 2Y3, 36 storeys, 415 units, built 2015, Marine Gateway has two addresses: 489 Interurban Way and 488 SW Marine Drive. Introducing Marine Gateway by PCI, an impressive and iconic architectural statement and stunning addition to Vancouver's skyline, which sits atop the popular Vancouver community of Marpole, at the south east corner of SW Marine Drive and Cambie Street next to the Marine Drive SkyTrain station. Marine Gateway is a mixed use, two hectares development that will include 415 condos and 46 rental housing

Property photos

