



### PROPERTY DETAILS

Beds	1 Beds
Baths	1 Baths
Sleeps	Sleeps
Area	602 sqft
Property Type	Strata unit/property
Parking	Yes
Storage	
Pet Policy	

For Rent

208 - 1618 Quebec St, Vancouver, BC V6A 2W5, Canada

1618 Quebec Street

\$2,000/Month

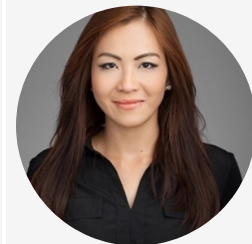
### Strata unit/property details

Suite#	208
Address	1618 Quebec
City	Vancouver
State / Province / Region	BC
ZIP / Postal Code	V6A 0C5
Country	CA
Strata management company	Stratawest Management Ltd.
Strata manager's name	Jayson Kurtz
Parking stall number/numbers	#324
Location of parking	P4

### INCLUDED UTILITIES

Parking: x <u>1</u> (Stall # <u>P4 #324</u> )
---

### CONTACT AGENT



**Bryna Ong**

Agent

Email: [bryna@bolld.ca](mailto:bryna@bolld.ca)

Ph: [1-7787986494](tel:1-778-7986494)





**PROPERTY DESCRIPTION****PROPERTY ADDRESS: 208 CENTRAL 1618 Quebec Street Vancouver - 1****PROPERTY FEATURES:**

- 1 Bedroom
- 1 Bathroom
- In-suite laundry
- 1 Parking stall
- 602 sq ft

**AMENITIES:**

- Elevator
- Concierge
- Fully equipped fitness centre
- Sauna
- Meeting room
- Lounge/party room
- Yoga & Pilates studio
- Rooftop Garden

**Pets Negotiable/NO SMOKING****AVAILABILITY: December 1, 2020****DESCRIPTION:**

Welcome to CENTRAL by Onni! This bright and spacious 1 bedroom condo unit offers 602sq ft of highly functional floorplan with hardwood flooring, floor to ceiling windows and air conditioning. Featuring a gourmet kitchen with gas range, sizeable oven and french door stainless steel refrigerator. The open concept kitchen extends to the living room making it perfect for entertaining. Other features include a stain-resistant contemporary heathered pattern carpet in the bedroom and a private balcony. Comes with a parking stall.

**PRIME LOCATION!** Located in False Creek near Olympic Village with easy access to Downtown core, waterways, transportation and attractions. Walking distance to Cambie Skytrain station. SCORES 96/100 IN WALKSCORE makes running errands is a breeze.

**NEARBY SCHOOLS:**

- Simon Fraser Elementary School
- Eric Hamber Secondary School
- St Francis Xavier School
- The Westside School

**NEIGHBOURHOOD:**

- Olympic Village Community Centre
- Science World
- Science World Skytrain
- Urban Fare
- London Drugs
- False Creek
- Seawall



Property photos

