



PROPERTY DETAILS

| | |
|---------------|----------------------|
| Beds | 1 Beds |
| Baths | 1 Baths |
| Sleeps | Sleeps |
| Area | 586 sqft |
| Property Type | Strata unit/property |
| Parking | Yes |
| Storage | Yes, storage locker |
| Pet Policy | |

INCLUDED UTILITIES

| |
|---------------------|
| Parking: x <u>1</u> |
| Storage: |
| Hot water |
| Gas |

Rented

M1 2907 1155 The High St, Coquitlam, BC V3B 7W4, Canada

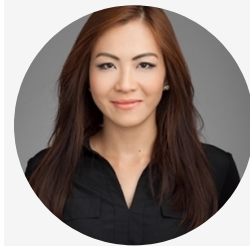
1155 The High Street

\$1600/Month

Strata unit/property details

| | |
|---------------------------------|------------------------------------|
| Suite# | 2907 |
| Address | 1155 The High Street |
| City | Coquitlam |
| State / Province / Region | B.C. |
| ZIP / Postal Code | V3B 0A3 |
| Country | CA |
| Strata management company | Ascent Real Estate Management |
| Strata manager's name | Nina Vranic / nvranic@ascentpm.com |
| Building manager's name | Ayub |
| Building manager's phone number | 604 679 1171 |
| Parking stall number/numbers | 339 |
| Location of parking | P2 |
| Storage locker number/numbers | 150 |
| Location of the storage | Rm 19 |

CONTACT AGENT



Bryna Ong

Agent

Email: bryna@bolld.ca

Ph: [1-7787986494](tel:1-778-798-6494)

PROPERTY DESCRIPTION

PROPERTY ADDRESS: 2907 M1 1155 The High St Coquitlam BC V3B 0A3

PROPERTY FEATURES:

- 1 Bedroom
- 1 Bathroom
- In-suite laundry
- Stainless steel appliances
- 1 parking stall
- 586 sq ft

AMENITIES:

- Fully-equipped exercise centre
- Lounge w/wet bar
- Billiards table w/ big screen TV
- Kids lounge w/rubberized floor
- Jungle gym and slide

NO PETS/NO SMOKING

AVAILABILITY: August 1, 2020

DESCRIPTION:

MOVE IN TODAY! Located at the highest point in Coquitlam Centre, This 1 bedroom suite offers breathtaking views in every direction, expansive floor-to-ceiling windows that bring natural light and famous "Cressey kitchen" with granite counter-tops and stainless steel appliances.

Few steps away from fabulous restaurants, parks, schools, shops, community centre, City Hall, West Coast express train station and the Evergreen Sky train Line.

Photos are of a similar unit

NEARBY SCHOOLS:

- Glen Elementary
- Maple Creek Middle School
- Pinetree Secondary School
- Westwood Elementary School
- Walton Elementary School

TERMS:

- Minimum 12-month lease
- 1/2 months rent deposit
- Tenant's insurance is a must
- Credit check required
- Move in fee as per Strata

PROFESSIONALLY MANAGED BY:

Bolld Real Estate Management
B - 2127 Granville Street
Vancouver BC V6H 3E9
www.bolld.com

Property photos

