



**PROPERTY DETAILS**

Beds	2 Beds
Baths	1 Baths
Sleeps	Sleeps
Area	630 sqft
Property Type	Strata unit/property
Parking	Yes
Storage	Yes, storage locker
Pet Policy	No pets

**INCLUDED UTILITIES**

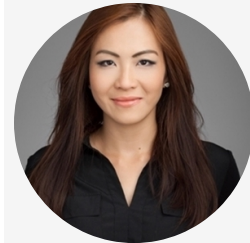
Parking: x <u>1</u> (Stall # <u>165</u> )
Hot water

For Rent  
**1283 Howe St, Vancouver, BC V6Z 1C1, Canada**  
**1283 Howe Street**  
**\$2800/Month**

**Strata unit/property details**

Suite#	3503
Address	1283 Howe Street
City	Vancouver
State / Province / Region	BC
ZIP / Postal Code	V6Z1B7
Country	CA
Strata management company	AWM ALLIANCE
Strata manager's name	Jason Scott (jason@awmalliance.com)
Parking stall number/numbers	165

**CONTACT AGENT**



**Bryna Ong**  
 Agent  
**Email: [bryna@bolld.ca](mailto:bryna@bolld.ca)**  
**Ph: [1-7787986494](tel:1-778-7986494)**





## PROPERTY DESCRIPTION

PROPERTY ADDRESS: 3503 TATE DOWNTOWN 1283 Howe Street Vancouver BC V6Z 1B7

### PROPERTY FEATURES:

- 2 Bedroom + Flex
- 1 Bathroom
- 1 Parking Stall
- 630 SqFt
- In Suite Laundry
- Gourmet Kitchen with top-of-the-line Miele, Blomberg, and Kohler Appliances, & European Cabinetry
- Deluxe Interior Design & Finishes

### AMENITIES:

- Contemporary porte-cochere
- Expansive overheight lobby
- Concierge
- Library w/over-height ceiling
- Billiards room
- 12-seat surround sound theatre
- Business meeting room

AVAILABILITY: August 1, 2021

NO PETS/NO SMOKING

### DESCRIPTION:

Designed by award-winning Merrick Architecture, The new landmark in Downtown Vancouver located on Howe and Drake offers luxurious urban living with breathtaking ocean views and panoramic sunset at TATE DOWNTOWN! Features Gourmet European kitchen appliances by Miele & Blomberg, lavish bathroom finishes, the master ensuite complete with luxurious soaker tub welcome you to a spa-like experience.

GREAT LOCATION! Just minutes away from the Seawall, Downtown Arts District and trendy Yaletown. With nearby parks, schools, restaurants, and retailers.

### NEARBY SCHOOLS:

- The Westside Schools
- Alexander Academy
- Crosstown Elementary Schools
- Pattison High School
- VanWest College

### NEARBY PARKS:

- Emery Barnes Park
- May & Lorne Brown Park

### TERMS:

Minimum 12-month lease  
1/2 months rent deposit  
Tenant's insurance is a must  
Credit check required



Property photos

