



**PROPERTY DETAILS**

Beds	2 Beds
Baths	2 Baths
Sleeps	Sleeps
Area	1257 sqft
Property Type	Strata unit/property
Parking	Yes
Storage	Yes, storage locker
Pet Policy	No pets

**INCLUDED UTILITIES**

Parking: x <u>1</u> (Stall # <u>13</u> )
Storage:
Gas

Rented

**TH 937 Mondrian II - 969 Richards St Vancouver BC**

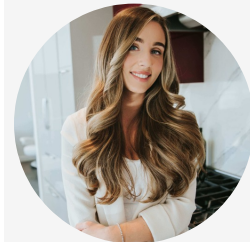
**969 Richards St**

**\$3300/Month**

**Strata unit/property details**

Suite#	Townhouse 937
Address	969 Richards St
City	Vancouver
State / Province / Region	BC
ZIP / Postal Code	V6B 3B6
Country	CA

**CONTACT AGENT**



**Angelica Frangolias**

Agent

Email: [angelica@bolld.ca](mailto:angelica@bolld.ca)

Ph: [1-7783788488](tel:1-7783788488)





## PROPERTY DESCRIPTION

PROPERTY ADDRESS: MONDRIAN II Townhouse 937 - 969 Richards Street, Vancouver BC V6B 3B6

### PROPERTY FEATURES:

- Unfurnished
- 2 Bedrooms
- 2 Bathrooms
- Flex Space
- Above ground private balcony
- Street level access
- 1 parking Stall
- 1 Storage
- 1,257 SqFt
- In-suite laundry

### AMENITIES:

- Elevator
- 24-hr security
- On-site manager
- Fully equipped exercise centre
- Hot tub/Steam room
- Common lounge
- Yoga studio
- Wet bar
- Billiards
- Landscaped courtyard

AVAILABILITY: May 1, 2020

NO PETS/NO SMOKING

### DESCRIPTION:

2 Bedroom Yaletown townhouse at MONDRIAN by Bosa. This elegant spacious residence offers 1,257 SqFt open concept living with designated kitchen, dining, and entertaining areas. The kitchen features S/S appliances, gas cooktop, granite counters and adjoining private pantry. Full guest bath on ground floor. The 2nd floor features generous master and guest bedrooms with 1 full bath, and 3rd floor loft offers spacious flex space that opens into a private patio. This building has high-speed elevators, wonderful amenities including fitness centre, change room, a garden, a guest suite, lounge sauna/hot tub and a courtyard for your enjoyment. 1 Private Parking & Storage.

LOCATION: Situated in the heart of Yaletown, minutes away from Yaletown Roundhouse station, bus stops, library, entertainment district and shops, Robson Street & Pacific Centre.

### NEARBY SCHOOLS:

- Crosstown Elementary School
- King George Secondary School
- Lowell High School
- Pattison School
- University of British Columbia

### TERMS:

Minimum 6-8 month lease  
1/2 months rent deposit



Property photos

