



Rented

1307 Centreview 112 E. 13th St North Vancouver

#1307 112 E. 13th st, north vancouver BC V7L-0L4

\$3300/Month

Strata unit/property details

Suite#	1307
Address	112 E. 13th st
City	north vancouver
State / Province / Region	BC
ZIP / Postal Code	V7L-0L4
Country	CA
Parking stall number/numbers	269 and 271
Location of parking	P4
Storage locker number/numbers	#371
Location of the storage	P4 Rm 26

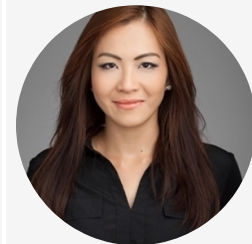
PROPERTY DETAILS

Beds	2 Beds
Baths	2 Baths
Sleeps	Sleeps
Area	1014 sqft
Property Type	Strata unit/property
Parking	Yes
Storage	Yes, storage locker
Pet Policy	

INCLUDED UTILITIES

Parking: x <u>2</u>
Storage:
Hot water
Gas

CONTACT AGENT



Bryna Ong

Agent

Email: bryna@bolld.ca

Ph: [1-7787986494](tel:1-778-798-6494)

PROPERTY DESCRIPTION

PROPERTY ADDRESS: 1307 CENTREVIEW 112 E 13th Street North Vancouver V7L 0E4

PROPERTY FEATURES:

- 2 Bedroom + flex
- 2 Bathroom
- 2 side-by-side Parking Stall
- 1 Storage Locker
- 1,025 SqFt
- Views of Downtown Vancouver, Lions Gate Bridge and the North Shore Mountains
- Air conditioning

AMENITIES:

- Concierge
- Squash Court
- Exercise Centre
- Outdoor swimming pool
- Hot tub
- BBQ/deck area

AVAILABILITY: NOW

NO PETS/NO SMOKING

DESCRIPTION:

One of the most anticipated buildings on the Lonsdale Corridor is finally complete; Welcome to Centerview by Onni! This two bedroom/two bathroom condo offers 1,025 Sq Ft of indoor living, with an incredible chef's kitchen that has top of the line stainless steel appliances which include a gas cooktop, a built-in fridge, built-in microwave and gorgeous stone countertops! The living/dining room flow right off of the kitchen and look onto the massive balcony that has a natural gas BBQ hook up, electrical outlets and stunning views of Downtown Vancouver, Lions Gate Bridge and the North Shore Mountains; Truly an entertainers dream! This unit comes with two side by side parking, one large storage locker, and a bike locker. Not to mention, Centerview has the best amenities around, Don't miss out!

SCHOOL CATCHMENTS:

- Queen Mary Community Elementary
- Carson Graham Secondary

PARKS:

- Harbourview Park
- Victoria Park
- Wagg Park.

NEIGHBOURHOOD:

- SCORES 89/100 IN WALKSCORE
- 15 mins radius to many boutique restaurants and bars
- Loblaws City Market
- Whole Food Market

TERMS:

12 Month Lease

Property photos

