



PROPERTY DETAILS

Beds	1 Beds
Baths	1 Baths
Sleeps	Sleeps
Area	650 sqft
Property Type	Strata unit/property
Parking	Yes
Storage	Yes, storage locker
Pet Policy	

Rented

502 Sequoia 9133 Hemlock Drive

9133 Hemlock Drive

\$1650/Month

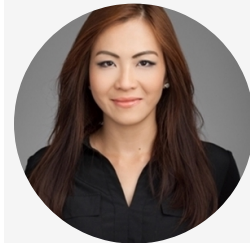
Strata unit/property details

Suite#	502
Address	9133 Hemlock Drive
City	Richmond
State / Province / Region	BC
ZIP / Postal Code	V6Y 4J9
Country	CA
Parking stall number/numbers	147
Location of parking	P2
Storage locker number/numbers	209
Location of the storage	3rd floor

INCLUDED UTILITIES

Parking: x <u>1</u> (Stall # <u>#147 (P2)</u>)
Storage: <u>Locker #209 (3rd floor)</u>

CONTACT AGENT



Bryna Ong
Agent
Email: bryna@bolld.ca
Ph: [1-7787986494](tel:1-7787986494)

PROPERTY DESCRIPTION

PROPERTY ADDRESS: 502 Sequoia 9133 Hemlock Drive, Richmond BC V6Y 4J9

PROPERTY FEATURES:

- 5th Floor
- South exposure
- 1 Bedroom
- 1 Bathroom
- Private balcony
- In-suite laundry
- 1 Parking Stall
- 650 SqFt
- Unfurnished

AMENITIES:

- Elevator
- Courtyard
- Fully equipped exercise centre
- Indoor Swimming pool and Hot Tub
- Sauna
- Steam Room
- Guest Suite
- Party Lounge

AVAILABILITY: April 1, 2020

NO PETS/NO SMOKING

DESCRIPTION:

SEQUOIA Tower in Hamptons Park, built by Cressey. One Bedroom south facing condo with engineering hardwood flooring, S/S appliances, granite countertops, crown moulding, and private south facing balcony overlooking trees. View of tree-lined open space from the kitchen, living room & Master Bedroom. Very well managed complex with great facilities including a fully equipped exercise room, an indoor swimming pool, sauna, hot tub, steam room, guest suite, and party lounge. One parking spot, one locker. Close to transportations, shopping centers, HWY, parks and schools (Anderson Elementary & MacNeil Secondary)

NEARBY SCHOOLS:

- Anderson Elementary School
- MacNeill Secondary School
- City Vancouver Academy
- Pythagoras Academy
- Richmond international Academy
- Kwantlen University

TERMS:

Minimum 12-month lease
1/2 months rent deposit
Tenant's insurance is a must
Move in fee as per Strata
Credit check required

Property photos

