



PROPERTY DETAILS

Beds	2 Beds
Baths	2 Baths
Sleeps	Sleeps
Area	978 sqft
Property Type	Strata unit/property
Parking	Yes
Storage	In property storage
Pet Policy	

INCLUDED UTILITIES

Parking: x <u>1</u> (Stall # <u>P7#211</u>)
Storage: <u>198</u>
Hot water
Gas

Rented

Luxurious 2BR 2Bath Condo @ Capitol Res on ROBSON - 833 Seymour St (833 Seymour St Vancouver)

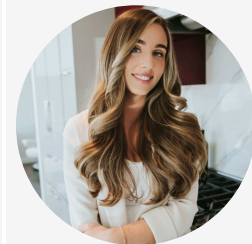
833 Seymour

\$2950/Month

Strata unit/property details

Suite#	2303
Address	833 Seymour St
City	Vancouver
State / Province / Region	BC
ZIP / Postal Code	V6B 0G4
Country	CA
Parking stall number/numbers	211
Location of parking	P7
Storage locker number/numbers	198

CONTACT AGENT



Angelica Frangolias

Agent

Email: angelica@bolld.ca

Ph: [1-7783788488](tel:1-7783788488)

PROPERTY DESCRIPTION

PROPERTY ADDRESS: 23rd floor 833 Seymour St Vancouver BC V6B 0G4

PROPERTY FEATURES:

- Unfurnished
 - 2 Bedrooms + Den
- 2 Bathrooms
- Balcony
- In-suite laundry
- 1 Parking
 - 1 storage locker
- 978 SqFt

AMENITIES:

- 4 High-speed elevators
- Concierge
- Fully equipped exercise centre
- Common TV lounge area
- 2 meeting rooms plus party room with handy kitchenette

AVAILABILITY: April 1, 2020

NO PETS/NO SMOKING

DESCRIPTION:

Welcome to Capitol Residences! Soaring above the city, this beautiful condo unit offers 978 sq ft of spacious living with 2 bedrooms, 2 bathrooms, 1 den, and open dining and living areas with floor to ceiling windows. Private patio and scenic views of the city, water, and mountains. Featuring a gourmet kitchen with full stainless steel appliance, gas cooktops and sleek flat cabinets. Comes with 1 parking stall and 1 storage locker.

PRIME DOWNTOWN LOCATION:

Conveniently located building in the heart of downtown where sophistication and style meet. Capitol residences on Seymour is just steps from Robson Street and surrounded by the finest dining, shopping area, hot spots, galleries, Orpheum theatre and concert venues in the city. Easy walk to Yaletown, with about 300 boutique restaurants and bar in your 15 minutes walking radius. Walking distance to Canada Line Skytrain Station and main public transits.

NEARBY SCHOOLS:

- Crosstown Elementary School
- King George Secondary School
- Pattison School
- Lowell High School

TERMS:

Minimum 12-month lease
1/2 months rent deposit
tenant's insurance is a must
credit check required

Property photos

