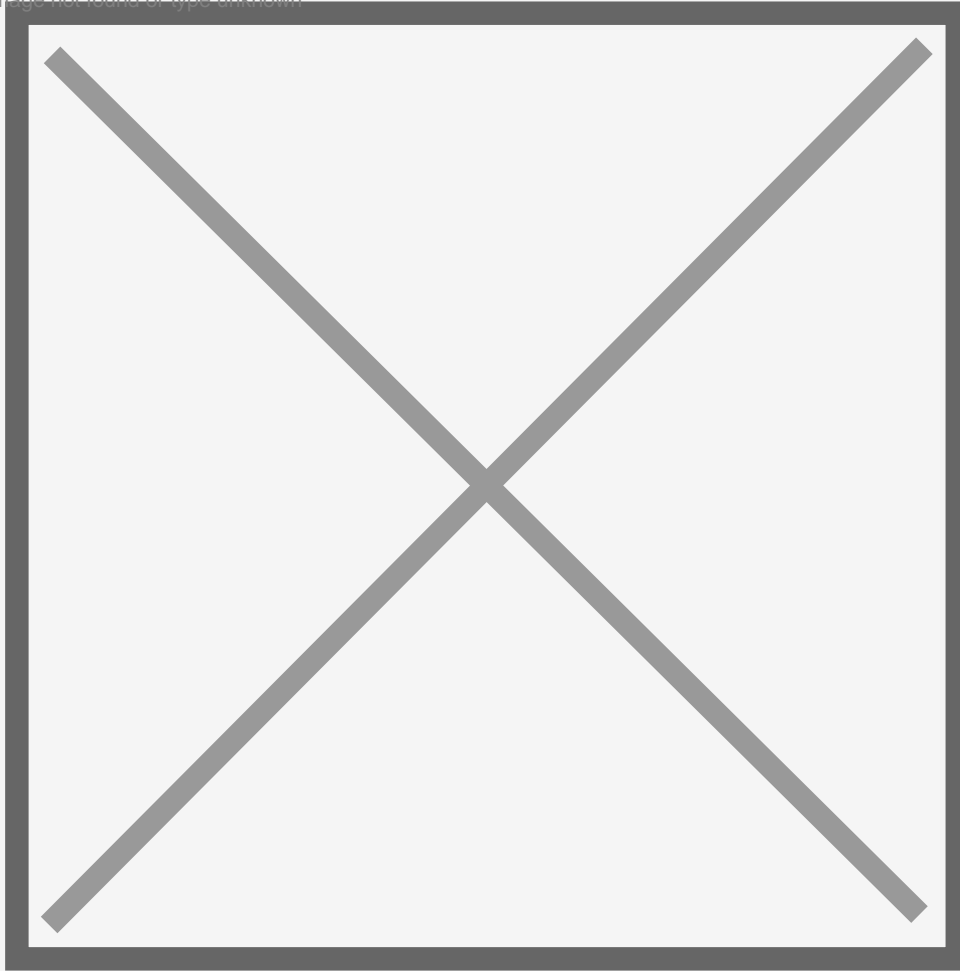


Image not found or type unknown



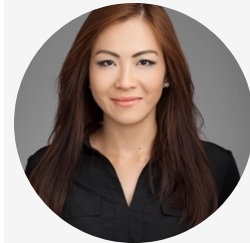
PROPERTY DETAILS

Beds	1 Beds
Baths	1 Baths
Sleeps	Sleeps
Area	575 sqft
Property Type	Strata unit/property
Parking	Yes
Storage	Yes, storage locker
Pet Policy	

INCLUDED UTILITIES

Parking: x <u>1</u>
Hot water

CONTACT AGENT



Bryna Ong
Agent
Email: bryna@bolld.ca
Ph: [1-7787986494](tel:1-7787986494)

Rented

1710 - 515 Foster Road Coquitlam British Columbia Canada - V3J 2L4

1710 - 515 Foster Road

\$1700/Month

Strata unit/property details

Suite#	1710
Address	515 Foster Road
City	Coquitlam
State / Province / Region	BC
Country	CA
Strata management company	AWM Management
Strata manager's name	Sean Krause

PROPERTY DESCRIPTION

PROPERTY ADDRESS: 1710 - 515 Foster Road, Coquitlam BC V3J 2L4

PROPERTY FEATURES:

- North facing unit
- 1 Bedroom + den
- 1 Bathroom
- 1 Parking Stall
- 1 Storage
- 575 SqFt
- In Suite Laundry
- Quartz countertop with S/S appliances (dishwasher, fridge, gas stove)

AMENITIES:

Club BlueSky

- 24,000 square feet of private resort-inspired amenities
 - Basketball & hockey sport court
 - Fully equipped training gym
 - Fireside entertainment lounge and games room with soft seating and large-screen TV
 - Private dining room with chef's kitchen
 - Theatre room with projector screen and club seats
 - Heated outdoor pool with loungers and cabanas
 - Indoor sauna and steam room with men's and women's changerooms
 - Poolside terrace featuring fire pit, harvest table, and BBQ area
 - Acoustically engineered music conservatory rooms
 - Business centre with multi-purpose boardroom and study nooks
 - Furnished guest suite
 - Outdoor children's playground
 - Full-time concierge for your convenience and peace of mind
 - BosaVOLT™—dedicated parking spaces provide electric vehicles with the power to recharge batteries
- AVAILABILITY:
January 1, 2020

NO SMOKING

DESCRIPTION:

Lougheed Heights in West Coquitlam was one of BlueSky's fastest selling communities, offering exceptional value in one of Metro Vancouver's fastest growing communities. With three towers, including Marquee at Lougheed Heights, the community offers innovative and modern living, with flexible floorplans and abundant amenities. With over 17,000SF of private amenity space, homeowners will have plenty of space to connect, recharge, or relax in this complete community that even offers retail opportunities. And for when you're looking to get out and about, the community offers direct access to the Evergreen SkyTrain line, which provides fast and convenient service to downtown Vancouver and Coquitlam City Centre.

SCHOOLS:

Elementary

K - 5 Roy Stibbs Elementary

Middle

6 - 8 École Banting Middle

Secondary

9 - 12 Port Moody Secondary

Early French Immersion - Elementary

K - 5 École Glenayre Elementary

Early French Immersion - Middle

