





Rented

**Pinnacle at the Park 510**

**1708 Ontario St, Vancouver, BC V5T 1A1, Canada**

**\$2500/Month**

**Strata unit/property details**

Suite#	510
Address	1708 Ontario Street
City	Vancouver
State / Province / Region	B.C.
ZIP / Postal Code	V5T 0J7

Country	CA
Strata management company	Associa
Building manager's phone number	778 345 9319
Parking stall number/numbers	99
Location of parking	P4
Storage locker number/numbers	Room B #46

### PROPERTY DETAILS

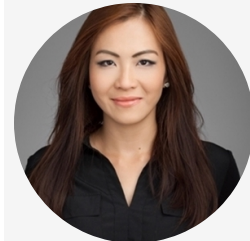
Beds	2 Beds
Baths	1 Baths
Sleeps	Sleeps
Area	718 sqft
Property Type	Strata unit/property
Parking	Yes
Storage	Yes, storage locker
Pet Policy	

### INCLUDED UTILITIES

Parking: x 1 (Stall # P4: #99)

Storage: Room B #46

### CONTACT AGENT



**Bryna Ong**  
Agent

Email: [bryna@bolld.ca](mailto:bryna@bolld.ca)

Ph: [1-7787986494](tel:1-778-798-6494)



**PROPERTY DESCRIPTION**

PROPERTY ADDRESS: 510 - 1708 Ontario Street, Vancouver B.C. V5T 0J7

**PROPERTY FEATURES:**

- East facing unit
- 2 Bedroom + Solarium + Den
- 1 Bathroom
- 1 Parking Stall
- 718 SqFt
- In Suite Laundry
- Quartz countertop, S/S Microwave, Refrigerator, Dishwasher and Gas Stove

AVAILABILITY: December 15, 2019

NO SMOKING

**DESCRIPTION:**

Brand new unit in Olympic Village False Creek Pinnacle at the Park building. This spacious two bedroom unit with a solarium and den features air conditioning, open floorplans and lots of windows for light. Beautiful L shape kitchen with premium stainless steel appliances.

GREAT LOCATION in Olympic Village, walk to boutique restaurants, Kraft Beer Market, Tap and Barrel, London Drugs, Creekside Community Recreation Centre and Supermarket.

**SCHOOLS:**

- Simon Fraser Elementary
- Hamber Secondary

**NEARBY PARKS:**

- Hinge Park

**TERMS:**

Minimum 12-month lease  
1/2 months rent deposit  
Tenant's insurance is a must  
Credit check required

**PROFESSIONALLY MANAGED BY:**

Bolld Real Estate Management  
B - 2127 Granville Street  
Vancouver BC V6H 3E9  
W: www.bolld.com

Property photos

