



PROPERTY DETAILS

Beds	2 Beds
Baths	2 Baths
Sleeps	Sleeps
Area	sqft
Property Type	Strata unit/property
Parking	Yes
Storage	Yes, storage locker
Pet Policy	No pets

INCLUDED UTILITIES

Parking: x <u>1</u>
Storage: <u>1</u>
Hot water

Rented

Brand New 2 Bed @ Surrey Central Prime building by SFU w/ 469 SF patio

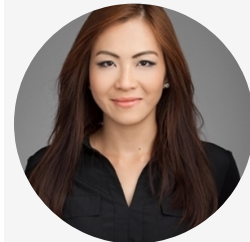
13438 Central Ave Surrey BC V3T 0N2

\$1700/Month

Strata unit/property details

Country	CA
---------	----

CONTACT AGENT



Bryna Ong

Agent

Email: bryna@bolld.ca

Ph: [1-7787986494](tel:1-778-798-6494)

PROPERTY DESCRIPTION**PROPERTY ADDRESS: PRIME AT THE PLAZA - 13438 Central Ave Surrey BC V3T 0N2****PROPERTY FEATURES:**

- 2 Bedroom
- 2 Bathroom
- One parking
- One storage
- In-suite laundry
- 469 SF patio
- Corner unit

AMENITIES:

- Elevator
- Fully equipped gym
- Wellness yoga studio, massage room, sauna and steam room
- Music and study rooms
- Entertainment rooms with kitchens
- Spectacular podium rooftop garden
- Fully equipped business centre
- Meeting/Group study room

NO PETS/NO SMOKING**AVAILABILITY: October 15, 2019****DESCRIPTION:**

Welcome to PRIME@THE PLAZA! 2 bedroom condo unit with a unique architectural design that offers 750 sqft of a highly functional layout. The high-end kitchen features stainless steel appliance package and granite countertops. Other features include a huge terrace with magnificent panoramic views, premium fixtures and finishes and innovative interiors.

CENTRAL LOCATION! Best location in Downtown Surrey. close to Skytrain, SFU Surrey Campus, Central shopping Mall, Surret City hall and Surrey Central Community Centre. Steps to Surrey Memorial Hospital.

NEARBY SCHOOLS:

- Canadian Tourism College
- MTI Community College
- Stenberg College
- Kwantlen Polytechnic University (KPU)
- SFU

TERMS:

- Minimum 12-month lease
- 1/2 months rent deposit
- Tenant's insurance is a must
- Credit check required

PROFESSIONALLY MANAGED BY:

Bolld Real Estate Management
B - 2127 Granville Street
Vancouver BC V6H 3E9

Property photos

