



### PROPERTY DETAILS

Beds	1 Beds
Baths	1 Baths
Sleeps	Sleeps
Area	659 sqft
Property Type	Strata unit/property
Parking	Yes
Storage	Yes, storage locker
Pet Policy	No pets

### INCLUDED UTILITIES

Parking:
Storage:
Hot water

Rented

**3663 Crowley**

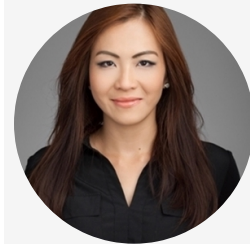
**3663 Crowley Drive Vancouver BC V5R 6H4**

**\$1650/Month**

### Strata unit/property details

Suite#	1010
Address	3663 Crowley Drive
City	Vancouver
State / Province / Region	BC
ZIP / Postal Code	V5R 6H4
Country	CA

### CONTACT AGENT



**Bryna Ong**

Agent

Email: [bryna@bolld.ca](mailto:bryna@bolld.ca)

Ph: [1-7787986494](tel:1-7787986494)





**PROPERTY DESCRIPTION****PROPERTY ADDRESS: 10th-floor LATITUDE 3663 Crowley Drive Vancouver BC V5R 6H4****PROPERTY FEATURES:**

- Unfurnished
- 1 Bedroom
- 1 Bathroom
- Balcony
- In-suite laundry
- 1 Parking Stall
- 1 Storage locker
- 659 sqft

**AMENITIES:**

- 24-hr security
- Elevator
- Fully equipped fitness centre
- Children's playground
- Lounge/party room
- Underground parking stalls

**NO PETS/NO SMOKING****AVAILABILITY: February 1st, 2020****DESCRIPTION:**

Welcome to LATITUDE built by Bosa! This condo unit offers 659 sqft of a functional layout featuring 1 bedroom, 1 bathroom and north-facing patio with nice views. Other features include a kitchen with a HIGH-END stainless steel appliance package and in-suite laundry. Comes with 1 parking stall and 1 storage locker.

**PERFECT LOCATION!** Situated in the heart of Collingwood Village minutes walk to Joyce Skytrain station, bus stops, shops, restaurants and community centre. 15minutes to Downtown Vancouver.

**NEARBY SCHOOLS:**

- Graham Bruce Community Elementary School
- Windermere Community Secondary School
- St Mary's School
- Collingwood Neighbourhood School

**TERMS:**

- Minimum 12-month lease
- 1/2 months rent deposit
- Tenant's insurance is a must
- Credit check required
- Move-in fee as per Strata



Property photos

