



For Rent

#1101 488 SW Marine Drive Vancouver BC V5W 1H3

488 SW Marine Drive Vancouver BC V5W 1H3

\$1,675.00/Month

Strata unit/property details

Suite#	1101
Address	488 SW Marine Drive
City	Vancouver
State / Province / Region	BC
ZIP / Postal Code	V5W 1H3
Country	CA

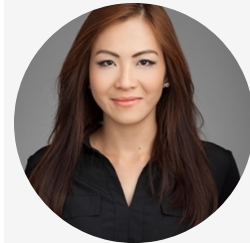
PROPERTY DETAILS

Beds	1 Beds
Baths	1 Baths
Sleeps	Sleeps
Area	450 sqft
Property Type	Strata unit/property
Parking	No
Storage	Yes, storage locker
Pet Policy	No pets

INCLUDED UTILITIES

Storage:
Hot water

CONTACT AGENT



Bryna Ong
Agent

Email: bryna@bolld.ca

Ph: [1-7787986494](tel:1-778-798-6494)

PROPERTY DESCRIPTION

PROPERTY ADDRESS: 11th floor Marine Gateway 488 SW Marine Drive Vancouver BC V5W 1H3

PROPERTY FEATURES:

- 1 Bedroom
- 1 Bathroom
- Balcony
- In-suite laundry
- 1 Storage locker
- 450 sqft

AMENITIES:

- Caretaker
- Elevator
- Lounge
- Meeting room
- Bike room
- Rooftop terrace with children's playground
- BBQ facilities

AVAILABILITY: AVAILABLE NOW

NO PETS/NO SMOKING

DESCRIPTION:

Welcome to MARINE GATEWAY, an immaculate 3 yr-old high rise condo by PC!! This east - facing condo unit offers 450 sqft of a functional open floor plan featuring 1 bedroom, 1 bath and a 60 sqft oversized covered balcony. The open concept kitchen offers stainless steel appliance package and laminate wood cabinetry. Enjoy the stunning open view to Mount Baker. Parking rentals available in the building.

PREMIER LOCATION! Located in the Marpole neighbourhood, walking distance to Canada Line Skytrain and Marine Drive station stop. Nearby parks include Ash Park, Winona Park and Eburne Park. 15 minutes to Downtown Vancouver, 3 minutes to Richmond and 8 minutes to YVR airport. Daily convenience for shopping, dining and entertainment.

NEARBY SCHOOLS:

- J.W. Sexsmith Community Elementary School
- Sir Winston Churchill Secondary School
- St Anthony of Padua School
- Vancouver Hebrew Academy

Please arrive early to the showing as it is a group showing and we go into the property at the exact time it was scheduled for. If you are late the leasing agent will not be able to show you the property. If you are running late, or cannot make the showing please call to speak with a representative.

Bolld Real Estate Management is a professional management company. We require that all applicants provide us with up to date and accurate information. We want to work with each applicant on getting their application approved although they must meet these requirements:

Property photos

