



PROPERTY DETAILS

Beds	2 Beds
Baths	2 Baths
Sleeps	Sleeps
Area	963 sqft
Property Type	Strata unit/property
Parking	Yes
Storage	Yes, storage locker
Pet Policy	No pets

INCLUDED UTILITIES

Parking:
Storage:
Hot water

Rented

Bright and Spacious 2 Bed/2Bath/Patio at STEVESTON Richmond

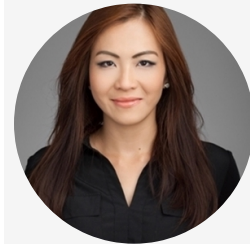
4280 Moncton St Richmond BC V7E 6T4

\$2200/Month

Strata unit/property details

Suite#	227
Address	4280 Moncton St
City	Richmond
State / Province / Region	BC
ZIP / Postal Code	V7E 6T4
Country	CA

CONTACT AGENT



Bryna Ong

Agent

Email: bryna@bolld.ca

Ph: [1-7787986494](tel:1-778-798-6494)

PROPERTY DESCRIPTION

PROPERTY ADDRESS: THE VILLAGE 227 - 4280 Moncton St Richmond BC V7E 6T4

PROPERTY FEATURES:

- 2 Bedrooms
- 2 Bathrooms
- Patio
- In-suite laundry
- Electric fireplace
- 1 Storage
- 1 Parking stall
- 963 sqft

AMENITIES:

- Elevator
- Bike room
- Fully equipped exercise centre
- Guest suites
- Clubhouse
- Recreation centre

NO PETS/NO SMOKING

AVAILABILITY: November 1st, 2019

DESCRIPTION:

Welcome to Steveston's THE VILLAGE! This 2 bedroom home offers a 963 sq ft of a functional layout with 2 bedrooms, 2 baths and a spacious living room that overlooks the quiet inner court. It has a roomy patio with access to both master bedroom and living room. Featuring an open concept kitchen with stainless steel appliances and granite countertops. Other features include an electric fireplace, engineered hardwood floors, 1 storage and 1 parking stall.

CENTRAL LOCATION! Conveniently located in the heart of Steveston near the crossroads of Moncton St and No.1 Road. Walking distance to a variety of restaurants, shopping centres, Steveston community centre and river boardwalk. With easy access to public transits.

NEARBY SCHOOLS:

- Robert Alexander McMath Secondary School
- Lord Byng Elementary School
- Pacific Rim Montessori Academy
- St Joseph the Worker School

NEARBY PARKS:

- Steveston park
- Gary Point park
- Great-West Cannery park

TERMS:

- Minimum 12-month lease

Property photos

