



For Rent

**HARMONY 105 9329 University Crescent Burnaby**

**9329 University Crescent Burnaby BC V5A 4Y4**

**\$2050/Month**

**Strata unit/property details**

Suite#	105
Address	9329 University Crescent
City	Burnaby
State / Province / Region	BC
ZIP / Postal Code	V5A 4Y4
Country	CA
Strata management company	Wynford Realty Group Ltd

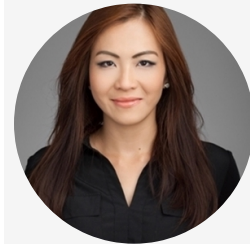
**PROPERTY DETAILS**

Beds	2 Beds
Baths	2 Baths
Sleeps	Sleeps
Area	922 sqft
Property Type	Strata unit/property
Parking	Yes
Storage	Yes, storage locker
Pet Policy	No pets

**INCLUDED UTILITIES**

Parking: x <u>1</u>
Storage: <u>1</u>
Hot water

**CONTACT AGENT**



**Bryna Ong**

Agent

Email: [bryna@bolld.ca](mailto:bryna@bolld.ca)

Ph: [1-7787986494](tel:1-778-7986494)





**PROPERTY DESCRIPTION****2050Showing****schedule:**<https://app.acuityscheduling.com/schedule.php?owner=21270221&appointmentType=18679396>**PROPERTY ADDRESS:** HARMONY 105 9329 University Crescent Burnaby BC V5A 4Y4**PROPERTY FEATURES:**

- FURNISHED!
- 2 Bedrooms
- 2 Bathrooms
- Patio
- Fireplace
- In-suite laundry
- Stainless steel appliances
- 1 Parking stall
- 1 Storage locker
- 922 sq.ft

**AMENITIES:**

- Elevator
- Fully equipped fitness centre
- Garden
- Bike room

**AVAILABILITY: NOW!**

NO PETS/NO SMOKING

**PROPERTY DESCRIPTION:**

Welcome to Harmony at SFU! This 2 bedroom ground level unit offers 922 sq.ft of smart open layout floorplan with separated bedrooms and great flow. The master bedroom includes a walk-in closet and a large ensuite with double sinks and tub-shower. The kitchen features full stainless steel appliances and plenty of storage. Other features include a gas fireplace, 187 sq.ft covered patio, 1 parking stall and 1 storage locker.

CONVENIENT LOCATION! Situated in the heart of SFU, walking distance to schools, shopping centres, transits, hikes/bike trails and 20 minutes to Downtown.

**NEARBY SCHOOLS:**

- University Highlands Elementary School
- Burnaby Mountain Secondary School
- Mediated Learning Academy
- Queen of All Saints Elementary School

**TERMS:**

- 12 Month Lease
- Half Month's Rent Security Deposit
- Tenant's Insurance
- Credit check is required



Property photos

