



PROPERTY DETAILS

| | |
|---------------|----------------------|
| Beds | 2 Beds |
| Baths | 2 Baths |
| Sleeps | Sleeps |
| Area | 828 sqft |
| Property Type | Strata unit/property |
| Parking | Yes |
| Storage | Yes, storage locker |
| Pet Policy | No pets |

For Rent

1200 West Georgia Street Vancouver BC Canada - V6E 4R2

1200 West Georgia Street

\$3080/Month

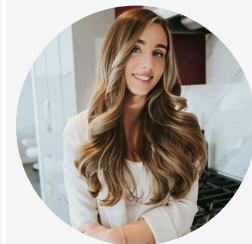
Strata unit/property details

| | |
|---------------------------|-------------------|
| Suite# | 2404 |
| Address | 1200 W Georgia St |
| City | Vancouver |
| State / Province / Region | BC |
| ZIP / Postal Code | V6E 4R2 |
| Country | CA |

INCLUDED UTILITIES

| |
|---|
| Parking: x <u>1</u> (Stall # <u>246</u>) |
| Storage: <u>194</u> |
| Hot water |

CONTACT AGENT



Angelica Frangolias

Agent

Email: angelica@bolld.ca

Ph: [855-266-8588](tel:855-266-8588)

PROPERTY DESCRIPTION**PROPERTY ADDRESS:** Residences on Georgia 24th floor - 1200 W Georgia St Vancouver, BC V6E 4R2**PROPERTY FEATURES:**

- 2 Bedrooms
- 2 Bathrooms w/stone counter
- 1 Den
- 1 Solarium
- In-suite laundry
- Stainless steel appliances
- 1 Secured parking stall
- In-suite storage
- 1 Basement locker
- 828 sq.ft.

AMENITIES:

- Elevator
- 24 hour onsite concierge
- Visitor's Parking
- Meeting rooms / Study rooms
- Fully equipped exercise centre
- Garden

NO PETS/NO SMOKING**AVAILABILITY:** Nov. 1, 2020**DESCRIPTION:**

City living at its best! Luxurious NE facing high floor corner suite in a sought after building in Downtown Vancouver. Features 2 bedrooms, 2 bathrooms, den and a solarium with Downtown city and water views. Offers 828 sq.ft of a practical layout with bright views in most rooms, floor to ceiling windows, fresh paint floors and stainless steel appliances. Units like this are rarely seen presented so well, with such great open views and renovated to this standard. 1 Parking and 1 storage included.

PRIME LOCATION: Only a few steps away to the Sea Wall, Business District and Robson St. The Sky-train station is a short walk and the bus stop is just across the road. 15 minutes walk to restaurants, coffee shops and groceries. Nearby parks include Harbour Green Park, Coal Harbour and Discovery Square.

NEARBY SCHOOLS:

- Lord Roberts Elementary School
- King George Secondary School
- St John's Secondary School
- St Augustine's Elementary School
- Ashton College

SHOWING SCHEDULE:

TUESDAY 10/13/2020 6:50pm

Property photos

